



IOWA HIGH SCHOOL MUSIC ASSOCIATION

President..... Thomas Nugent, Villisca
 Vice-President Frank Brigham, Oelwein
 Treasurer..... Steven Colton, Marion

Tom Dannen, Truro
 Janice Merz, Fort Dodge
 Tim Peterson, Charter Oak
 Executive Director, Alan S. Greiner

(515) 432-2013 1605 S. Story St, PO Box 10, Boone, Iowa 50035-0010 FAX: (515) 432-2961
 alan@ihama.org <http://www.ihama.org> jeanie@ihama.org

August, 2001 Issued by the Executive Committee Bulletin No. 219

FALL BULLETIN

EVENT	REGISTRATION DEADLINE	PENALTY DEADLINE
Marching Band	September 6	September 13
All-State Auditions	September 13	September 20
Show-Jazz Choir/Jazz Band	November 29	December 6
Piano	December 6	December 13

Please note that both the registration and the penalty deadlines are postmark deadlines.

FESTIVAL DATES

Marching Band	October 6 (North); October 13, 2001 (South)
All-State Auditions	October 20, 2001
All-State Festival	November 15-17, 2001
Jazz Band, Classes 3A, 1A & A	January 12, 2002
Show-Jazz Choir/Jazz Band, Classes 4A & 2A	January 26, 2002
Show-Jazz Choir, Classes 3A, 1A & A	January 28, 2002
Piano	February 9, 2002
Solo/Small Ensemble, Classes 3A & A	March 23, 2002
Solo/Small Ensemble, Class 2A	April 6, 2002
Solo/Small Ensemble, Classes 4A & 1A	April 13, 2002
Large Group, Classes 3A & 1A	May 3, 2002
Large Group, Classes 4A, 2A & A	May 4, 2002

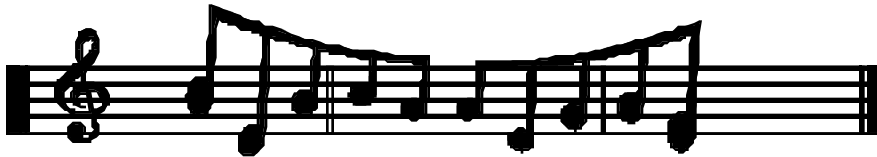
MEMBERSHIP DUES

Have you paid your membership dues to the Iowa High School Music Association? Send your dues **NOW** to Alan S. Greiner, Executive Director, Iowa High School Music Association, PO Box 10, Boone, IA 50035-0010.

Dues are \$25 if paid by September 15; \$37.50 if paid between September 16 and January 1. (Constitution, Article III, Section 1)

TABLE OF CONTENTS

Noteworthy Decisions of the Executive Committee.....	2
Sanctioning Policy.....	2
Penalty Deadline Information.....	4
Executive Committee & DAG Elections.....	6
State Marching Band Festival.....	7
All-State Festival.....	10
Audition Centers Assigned.....	12
Selection of the Band.....	13
Selection of the Orchestra.....	16
Selection of the Chorus.....	17
Housing Rules and Regulations.....	19
Piano Festival.....	21
Approved Intrastate Music Competitions.....	22
Teacher Tenure Award.....	23
Constitution.....	23
Meeting Minutes.....	31
Classification of Schools.....	38
Adjudicator Certification Clinics.....	41
Approved Adjudicators as of July 1, 2001.....	42
Academic Achievement Awards.....	45
Unified Activities Federation Calendars.....	52



THE MISSION OF THE IOWA HIGH SCHOOL MUSIC ASSOCIATION IS:

1. To foster and perpetuate music as an art form and an essential component of the secondary school curriculum;
2. To organize and regulate festivals that assure fairness and equity and stimulate students to their greatest possible potential;
3. To establish criteria and standards for musical performance that insure the musical/educational integrity of Iowa high school music programs;
4. To encourage member participation in Association-sponsored events, assuring all participants of a nonbiased evaluation of their performances;
5. To develop programs that bring due recognition to outstanding musicians and performances;
6. To provide musical opportunities that will enrich the lives of high school students and aid in the development of a life-long appreciation of music.

NOTEWORTHY DECISIONS OF THE EXECUTIVE COMMITTEE

1. Realigned the districts for All-State Auditions. (See page 12)
2. Reduced the number of districts for Piano Festival to seven. Final information will be available in a late fall mailing.
3. Established a new Registration/Penalty Policy. (See page 4)
4. Contracted with Music T's to provide music t-Shirts and memorabilia to the Marching Band Festival.
5. Amended the All-State Camp policy to allow camps to begin on August 1. Established July 25, or the first business day following, as the vocal music release date.
6. Increased adjudicator/auditor remuneration to \$140 per day and mileage to \$.26 per mile.
7. Created a complimentary admissions policy for chaperones for Show-Jazz Choir/Jazz Band and Large Group Music Festivals.
8. Created artwork/logo competition. (See below)

Correction to All-State Vocal Music Instructions

Note: The printed instructions accompanying your music contain an error. #5 under "Un-traveled Worlds" should read **mm. 81-84**, not 181-184.

ARTWORK/LOGO COMPETITION

The IHSMA is sponsoring an artwork/logo competition. Any high school student whose high school is a member of the IHSMA is eligible. Artwork submitted should be designed to be used in conjunction with IHSMA publications, correspondence, and the IHSMA website. Artwork should be designed with Vocal, Band, and String programs in mind. All work must be original. All submissions will become the property of the IHSMA. All submissions must be received by November 30, 2001.

The Grand Prize Winner will receive a \$250 Savings Bond.

Send entries to: Alan S. Greiner, Executive Director, Iowa High School Music Association, PO Box 10, Boone, IA 50036-0010.

ATTENTION!! ADMINISTRATORS AND MUSIC DIRECTORS!!

The following is the sanctioning policy as amended on April 23, 1991. It is imperative you check closely any music competition sponsored by any agency other than the IHSMA office. **If it has not been approved, your school will be in violation of this policy if you participate.**

SANCTIONING POLICY OF THE IHSMA

(Effective July 1, 1991)

Recognizing that school music programs have a community commitment that extends beyond the confines of strictly school events, and, recognizing also that there are events that extend beyond the desire or intent of the Iowa High School Music Association to administer, the Executive Committee of the Iowa High School Music Association, acting under the authority granted in the constitution, sets forth the following regulations and rec-

ommendations for governing the participation of its member schools in events sponsored by agencies other than this Association during the academic year.

1. Member schools may participate in other competitive music events provided they also participate in the IHSMA program in instances of same-day programs.
2. Member schools, and students representing member schools, may not compete for cash prizes other than out-of-pocket expenses.
3. Competitions, in Iowa, will not be approved if classification guidelines do not comply with those established by the IHSMA. The only exception permitted is an open competition with all schools competing in the same class.
4. The eligibility regulations of the Iowa High School Music Association are in effect for any competitive music program that is sponsored-approved by the Iowa High School Music Association. In instances of early graduation, the student loses eligibility at the conclusion of the last scheduled day of attendance.
5. Programs must be open to all students, regardless of race, creed, sex or national origin.
6. Competitive music events, originating in Iowa, must have the written approval of the IHSMA office.
7. Multiple-day events must make use of at least one day of the weekend.
8. Participation, by any member school, in out-of-state competitive music programs shall be the sole responsibility of the involved school district provided Regulation No. 1,2, and 4 of the above are abided.

It is further **RECOMMENDED** that:

1. Whenever possible, competitions should be held on non-school time (weekends, vacation, etc.)
2. Schools should emphasize a 125-mile, or half-day, limitation for events scheduled on a weekday and a 300-mile limitation for events scheduled on weekends.
3. Events sponsored by non-educational agencies should be scrutinized with extreme care. Sponsoring agencies should submit, upon request, a financial accounting to demonstrate that they do not profit unreasonably from such sponsorship.
4. Activities scheduled on the Unified Iowa High School Activities Federation calendar should be given priority in relation to programs sponsored by outside agencies.

RECORDING POLICIES OF THE IHSMA

Recording services are provided for the All-State Festival and Show Choir/Jazz Choir Festivals. Cameras and recorders will not be permitted in the performance centers for these events.

Solo/Small Ensemble and Large Group Festivals cannot accommodate audio and video recorders without serving as a distraction to performers and audience. Cameras and recorders will not be permitted in the performance centers for these events.

Personal video cameras will be permitted at the State Marching Band Festival, however, the site management may designate a specific area from which to record.

The IHSMA will not utilize personal audio or video tapes in disputes over a judge's ruling.

PENALTY DEADLINE INFORMATION/INTENT TO REGISTER

IHSMA Registration/Penalty Policy: Events sponsored by the Iowa High School Music Association have established registration deadlines. Both the Registration Deadline and the Penalty Deadline are **postmark** deadlines. Entries postmarked after the registration/postmark deadline must include the standard registration fee for that particular group or individual PLUS the 50% penalty fee (to a **MAXIMUM** of \$25.00).

IMPORTANT: CHANGES IN POLICY. Once the penalty **postmark** deadline has passed, schools may still register for participation by paying the following **additional** penalties: Marching Band - \$100.00 per entry; All-State - \$100.00 per student; Show-Jazz Choir/Jazz Band - \$100.00 per entry; Large Group - \$100.00 per entry; Piano/Solo/Small Ensemble – double the registration fee. These late entries will be scheduled at the convenience of the festival host.

Early each school year, the IHSMA will mail an "INTENT TO REGISTER" card to every member school, requesting its completion and return. This card will provide information relative to the programs in which each school intends participation. On the final day of any registration period, the IHSMA office will fax or email a reminder to schools who have declared intent to participate, and from whom no entry has been received.

The registration and penalty deadlines for all IHSMA events follow:

EVENT	POSTMARK DEADLINE	PENALTY DEADLINE
Marching Band	September 6	September 13
All-State	September 13	September 20
Show Choir/Jazz Band	November 29	December 6
Piano	December 6	December 13
S/SE/LG - 3A,A	February 21	February 28
S/SE/LG - 2A	March 7	March 14
S/SE/LG - 4A, 1A	March 14	March 21

ACT TEST DATES, 2001-2002

October 27, 2001	December 8, 2001	February 9, 2002
	April 6, 2002	June 8, 2002

ACT TESTING CONFLICTS

Directors should be alerted to the dates of the ACT tests for the upcoming school term. Careful planning will need to be done by several of your students to avoid conflicts with IHSMA festival dates. The February 9 date conflicts with the Piano Festival and the April 6 date conflicts with our Class 2A Solo/Small Ensemble Festival.

NOTICE!! NOTICE!! NOTICE!!

The Executive Committee has ruled that **ONLY** an official post office postmark is acceptable for determining mailing deadlines. A school's postage meter, though dated, **IS NOT** an official postmark.

ACADEMIC ACHIEVEMENT AWARDS

The Iowa High School Music Association will recognize larger ensembles - Marching Band, Show/Jazz Choir, Jazz Band, Orchestra, String Orchestra, Mixed Chorus, Concert Band, Bass Clef Chorus, Treble Clef Chorus -that excel in academic achievement **and also participate in the IHSMA festival designated for that particular ensemble**. This award program features two levels of designation:

Distinguished Academic Achievement: GPA = 3.25-4.00

Excellence in Academic Achievement: GPA = 3.00-3.24

So awards can be distributed expeditiously, the GPA of the first semester will be employed so ensembles performing at the Large Group Festival in May can receive their awards prior to the conclusion of the school year. An appropriate 11" X 14" certificate will be forwarded to the deserving schools upon receipt in the IHSMA office of the application form and verification of participation in the festival can be made. Applications are mailed to each school in late August. They may be found on our web site: www.ihsma.org.

INDIVIDUAL AWARDS FOR ACADEMIC ACHIEVEMENT

The IHSMA has individual 8" x 10" certificates which may be purchased for individual members of any large ensemble qualifying for the Academic Achievement Award. These are available, in quantity, from the IHSMA office at a cost of \$.10 each. Indicate the number desired on the Academic Achievement Award Form and include payment.

AWARDS TO RECOGNIZE ACCOMPLISHMENT

The accomplishment of high school music students can be recognized via an awards program available through the Iowa High School Music Association. Pins and medals are available for individuals and plaques recognize the accomplishment of larger ensembles.

Division I pins/medals feature a blue ribbon and insert on a gold background;

Division II pins/medals feature a red ribbon and insert on a silver background;

Division III pins/medals feature a white ribbon and insert on a bronze background.

The awards program is pictured below. Order blanks are provided at each festival sponsored by the Iowa High School Music Association.

**Insert awards pictures here
One full page**

EXECUTIVE COMMITTEE ELECTIONS

There is one position on the Executive Committee up for election this fall. Tim Peterson, Charter Oak, has completed one term on the Executive Committee and is eligible for re-election. This position (superintendent or high school principal) is open for election, term ending 2006.

Nomination blanks for this vacancy will be mailed August 24, 2001, and will be canvassed by the Election Board on September 7, 2001. The top two candidates, plus ties, will be named as nominees for this position. The Official Ballot, with the qualified nominees' names printed thereon, will be mailed to member schools on September 21, 2001. The chair of the Elections Board must receive the election ballots by October 5, 2001.

The newly elected member will assume duties upon notification of election by the Executive Director.

DISTRICT ADVISORY GROUP ELECTIONS

District Advisory Group members are selected for a three-year term on a rotating basis. An administrator, an instrumental director, and a vocal director represent each district, in turn.

DISTRICT ADVISORY GROUP REPRESENTATIVES

NW: Curt Ohrlund, LeMars	SW: Kent Klinkefus, Harlan
NC: Kathleen Nelson, Lake Mills	SC: Jay Nugent, Saydel
NE: Stan Slessor, Waverly	SE: Roger Henderson, Grinnell
North: Terms Expire: 2003	South: Terms Expire: 2002

EXECUTIVE COMMITTEE MEMBERS

Janice Merz, Fort Dodge – IASB
Frank Brigham, Oelwein – 1st Term, 2002
Steve Colton, Marion – 1st Term, 2004
Tim Peterson, Charter Oak – 1st Term, 2001
Thomas Nugent, Villisca – 1st Term, 2003
Tom Dannen, Truro – 1st Term, 2005

NFIMA IS FOR ALL MUSIC TEACHERS/ADJUDICATORS

The National Federation Interscholastic Music Association presents an attractive package of benefits to persons involved with either the direction or adjudication of high school musicians.

The \$10 annual fee will provide members with an outstanding insurance package featuring \$1,000,000 liability protection while traveling to and from music contests and festivals as either a judge or director; \$10,000 Excess Accidental Medical Insurance; \$5,000 Accidental Death and Dismemberment Insurance; \$50 per week for up to 26 weeks Disability Income Insurance in addition to twice-yearly publications on music adjudication. Benefits also include reduced rates at Best Western and Howard Johnson Motels and a program of reduced rates on car rentals with participating companies. Membership applications can be obtained by calling the IHSMA office.

STATE MARCHING BAND FESTIVAL

October 6, 2001 (North) October 13, 2001 (South)

Schools must enter the district designated for their county. **Entry Deadline Sept 6, 2001.** Address all correspondence to: Alan S. Greiner, Executive Director, Iowa High School Music Association, PO Box 10, Boone, IA 50036-0010.

MARCHING BAND ASSIGNMENTS

North

District #1: Washington High School, Cherokee; Manager: Walter Hicks, Band Director
Buena Vista, Cherokee, Clay, Dickinson, Ida, Lyon, O'Brien, Osceola, Plymouth, Sioux, Woodbury

District #2: Fort Dodge, Dodger Stadium; Manager: Curt Klein, Band Director
Boone, Butler, Calhoun, Carroll, Cerro Gordo, Emmet, Floyd, Franklin, Greene, Grundy, Hamilton, Hancock, Hardin, Humboldt, Kossuth, Marshall, Mitchell, Palo Alto, Pocahontas, Sac, Story, Webster, Winnebago, Worth, Wright

District #3: Dubuque, Dalzell Stadium; Manager: Bill Rowley, Band Director
Allamakee, Bremer, Chickasaw, Clayton, Fayette, Howard, Winneshiek, and schools **on or north of Highway 20** in Black Hawk, Buchanan, Delaware, Dubuque

District #4: Cedar Rapids, Kennedy, Kingston Stadium; Manager: Jim Jurgenson, Band Director
Benton, Jackson, Jones, Linn, Tama plus schools **south of Highway 20** in Blackhawk, Buchanan, Delaware, and Dubuque

South

District #5: Lewis Central, Council Bluffs; Manager: Derick Bluford, Band Director
Adams, Audubon, Cass, Crawford, Fremont, Harrison, Mills, Monona, Montgomery, Page, Pottawattamie, Shelby, Taylor

District #6: Des Moines, Lincoln, Hutchins Stadium; Manager: Rich Wolfe, Band Dir.
Adair, Clarke, Dallas, Decatur, Guthrie, Lucas, Madison, Polk, Ringgold, Union, Warren, Wayne

District #7: Pella; Manager: Guy Blair, Band Director

Appanoose, Davis, Iowa, Jasper, Jefferson, Keokuk, Mahaska, Marion, Monroe, Poweshiek, Van Buren, Wapello, Washington (plus Newton)

District #8: Davenport, Central, Brady Street Stadium; Manager: Ted Reicher, Band Director

Cedar, Clinton, Des Moines, Henry, Johnson, Lee, Louisa, Muscatine, Scott

RULES AND REGULATIONS

1. **Eligibility:** Participation is restricted to ensembles from member schools of the Iowa High School Music Association and containing students enrolled in grades 7-12 only. Participating students must be in good standing in their school and currently enrolled and eligible in the instrumental music program. They must be in attendance at a minimum of 50% of the scheduled rehearsal sessions to be considered eligible for participation in this event.
2. **Registration Fee:** \$75. Use the form enclosed with this bulletin and mail your registration and fees to Alan S. Greiner, Executive Director, Iowa High School Music Association, PO Box 10, Boone, IA 50036-0010, postmarked on or before September 6, 2001.
3. **Field:** The performance area will be defined as that area within the boundaries of a regulation-size football field plus an area 5 yards wide in front of the field and between the 25-yard lines. The end zones are not a part of the performance area; however, an ensemble may elect to **start** their show from the end zone or beyond the sidelines. The entire unit must enter the competition field within 60 seconds of the start of the actual performance. A .5 point penalty will be deducted for each 15-second (or fraction thereof) segment of violation of the 60-second entry rule. Managers shall notify participating schools in advance concerning (a) direction of the field, (b) location of judges, (c) peculiarities of the area that would restrict entrance or exit.
4. Each band will be allowed a total of 15 minutes for field entrance, warm-up, performance and field exit. Time will begin when the clock is re-set to 15 minutes following the previous band's time slot. The judges will begin judging after the drum major/majorette's salute and the announcer states, "Band, take the field." The first movement of the band or sound from the band after this command will begin the timing for the performance. Judging will cease with the salute of the drum major/majorette at the conclusion of the performance. The performance must last at least 7 minutes. A .5 point penalty will be deducted for each 15-second segment (or fraction thereof) of violation short of the 7 minutes. All personnel and all equipment must have passed the designated "clearance line" and cease all sound within the 15-minutes time limit. The "clearance line" will be designated by the festival host and will be shown to each director prior to the performance. A .5 point penalty will be deducted for each 15-second segment (or fraction thereof) of violation of the exit rule. The timekeeper will record all violations on the provided form and submit it along with the adjudication forms for tabulation.
5. A salute signaling the end of the performance is mandatory. A 1-point penalty shall be assessed to any performance not complying with this regulation. ****Directors:** If your show has an unusual feature that might be confusing to either the management or adjudicators, take a short amount of time to explain same to the timer so each performing ensemble has the same opportunity.

6. With the exception of command personnel who may cross and re-enter the boundaries at will, no performer may leave the performance area until the show is concluded (this assumes that if a corner, sideline or end zone entrance is employed, once the student officially enters the field, they cannot leave until conclusion). Stepping **on** a boundary will be considered crossing it. **Penalty:** A .5 point deduction for every observed violation of boundary regulations.
7. Marching units that employ extraneous equipment as a portion of their performance may have such equipment brought on and/or removed from the field by **non-uniformed** personnel. The employment of uniformed personnel for this purpose will result in the .5 deduction for every observed entrance/departure.
8. Amplified instruments will be allowed on the field, however, the site is not required to furnish the power or hookups for such equipment.
9. Students may retrieve dropped equipment. It will, however, be a consideration of the M&M GE and M&M Execution judges.
10. Marking time and/or excessive stopped time will be a consideration in all captions of the Marching and Maneuvering Judges.
11. Fire **WILL NOT** be permitted as a portion of any performance.
12. Judging for this festival will be on a point basis employing four different judges. The four areas of judging criteria are: Music-General Effect; Music Execution; Marching and Maneuvering-General Effect; and Marching and Maneuvering - Execution. **Judging Criteria:** The criteria for each judging assignment is spelled out in detail on the adjudication forms. The point breakdown for divisional ratings is as follows:
 - 68-100 = I
 - 55-67.99 = II
 - 42-54.99 = III
 - 29-41.99 = IV
 - 0-28.99 = V
13. Entry "for comments only" is permissible for this festival. Such information must be made known to the festival manager by one week prior to the festival.
14. Divisional ratings only will be announced and posted.
15. **Any band using the flag of the United States of America in performance should consult the latest edition of the American Legion Competitive Flag Code for proper flag etiquette.**
16. **Irregularities and Protests:** Protests must be submitted to the Executive Committee for ruling. Each protest must be in writing and accompanied by the judges' ballots, the timekeeper's report and at least one of the judges' taped comments.
17. A PA system and microphone will be available.
18. Free admission for chaperones (3 per bus) will granted by the festival management.
19. Directors may provide a "confidential statement to the adjudicators" identifying students who might be prevented from marching at an expected level of dignity and grace as a result of injury, defect or physical inability. There is no need to identify the obvious, i.e., leg in a cast, etc.
20. Disregarding a directive from the festival manager may be cause for withholding of a rating.

NOTICE!!! MARCHING BANDS NOTICE!!!

Marching Band Adjudication Forms have entire sections devoted to the evaluation of auxiliary personnel as they perform with the Marching Band. For bands appearing with

the **total auxiliary personnel** consisting of two drum majors/majorettes or less, the IHSMA has devised a separate set of yellow adjudication forms eliminating those categories. Check the appropriate blank on the Marching Band Registration Card if your group meets this criteria and you wish to be evaluated on these yellow adjudication forms.

VIDEOTAPING OF MARCHING BAND FESTIVALS

The performance of each Marching Band will be video taped by Mr. Video Productions. Registration fees cover the cost of the tape, a complimentary copy provided to each ensemble, and the video service. Site managers may direct personal cameras to a specific location.

CONDUCT OF PARTICIPANTS/DIRECTORS

It is the clear obligation of participating students, directors, and administrators to practice the highest ideals of cooperation and the ethics of competition. The audition host or festival manager has the authority to take whatever immediate steps might be necessary in instances of questionable conduct. The Executive Committee shall have full authority to penalize any member school whose representatives may be, in the opinion of the Committee, guilty of the violation of this obligation.

ALL-STATE MUSIC CAMP GUIDELINES

A joint committee of All-State Camp sponsors has developed the following guidelines for persons/institutions desiring to sponsor All-State Music Camps:

1. No camp may begin operations prior to August 1.
2. Camps are encouraged to rehearse **only** with the supplied materials, i.e., pronunciations, rehearsal directions, etc., supplied and provided with the music. Telephone calls should not be directed to the All-State Chair, All-State Conductor, or the Executive Director of the IHSMA.
3. Any All-State camp desiring to function within the state of Iowa must obtain the annual written approval of the IHSMA office.
4. Registration monies should be solely for the operation of the camp and **cannot** include the purchase of employed music. Obtaining the All-State music remains the responsibility of the member schools and should be obtained by them directly from the supplier.

ALL-STATE FESTIVAL

The Iowa All-State Music Festival is jointly sponsored and staffed by the IHSMA and IMEA to provide a state-wide selective festival for the instrumental and choral high school musicians of Iowa.

ALL-STATE CHAIRS

ChorusDr. Greg Grove, Iowa City
 Band.....John A. Aboud, Algona
 Orchestra.....Bruce Eilers, Waterloo

GUEST CONDUCTORS

Chorus.....Peter Bagley, University of Connecticut
 Band.....Col. John Bourgeois, USMC (retired)
 Orchestra.....Dr. Carol Smith, Sam Houston State University

ELIGIBILITY

Participation is restricted to students from schools that are members of the Iowa High School Music Association and enrolled in grades 9-12 only. Auditioning students must be in good standing and currently enrolled and eligible in the respective ensemble eligible for participation in the Large Group Music Festival (i.e., wind/percussion - concert band or orchestra; vocal - chorus; strings - orchestra). To be considered a member of the respective ensemble, a student must be enrolled and in attendance at a minimum of 50% of the scheduled rehearsal sessions. 9th graders not eligible for Large Group participation as a result of district grade combinations, i.e., 7-8-9 or 8-9, will be determined to be eligible provided they meet the attendance requirements for their ensemble as specified in the previous sentence. Membership in large ensembles is required for all school districts where such ensembles exist.

Note: Students must make a choice in the area they will audition. Students may **NOT** try out for both vocal and instrumental or on more than one instrument. **Penalty for Violation:** Removal from All-State for students involved. **Do not enter students who have a conflict with any activity.** Each student must attend all rehearsals in Ames.

REGISTRATION FEES

The following fees have been established for the 2001 All-State Festival:

Vocal Entries	\$14.00
Wind/Percussion/Piano	\$10.00
Strings	\$10.00

The maximum number of entries permitted by any one school shall be as follows:

Wind & Percussion: 28 Strings: 28 Vocal: 28 - 7 singers per part

The release date of All-State chorus music by Jay's Music is Wednesday, July 25, 2001. Music will be delivered from Jay's Music of Sioux City, IA, upon receipt of the registration form in the IHSMA office (if not previously ordered). If it does not arrive in a reasonable amount of time, please notify the Association office. Music packages will contain instructions regarding pronunciations and any special instructions for preparation. The patriotic numbers are **NOT** a part of the vocal registration fee. **Schools wishing to obtain additional copies of the choral music for directors, accompanists, or chorus are to call directly to Jay's Music (1-800-798-5555; fax-712-255-7566) and bill those copies directly to their district. Include a P.O. # for such orders.**

Instrumental entries: students selected for participation in the All State Band or Orchestra will receive their festival music **at the audition site** upon notification of a successful audition. The All-State instrumental folders (band and orchestra) will contain the parts for "America, the Beautiful" and "The Battle Hymn".

REGISTRATION

Registration forms are enclosed with this Bulletin. The registration deadline for All-State is **September 13, 2001**. The Penalty Postmark Deadline is September 20, 2001. The correct fee **must** accompany registration. **Purchase orders are not accepted by the IHSMA.** Registration forms are to be mailed to: Alan S. Greiner, Executive Di-

rector, Iowa High School Music Association, PO Box 10, Boone, IA 50036-0010. All areas of the registration form MUST be completed. Incomplete registrations may be returned for completion.

“Trades” in registration, one instrument for another, or one voice part for another, will be accepted until 5:00 p.m. of the Penalty Postmark Deadline (Sept 20). Trades will only be accepted with written verification (letter, e-mail or fax, no phone calls). These trades carry no penalty.

ERRORS IN REGISTRATION

Clerical errors in registration (omissions, wrong instrument or wrong voice part indicated on the Registration Form) can be corrected after the Penalty Postmark Deadline (Sept. 21 or later) by paying a \$100.00 per student penalty. This penalty MUST be received in the IHSMA office by Friday, Oct. 12. If the penalty is not received by this date, an audition will not be permitted. This penalty must be paid by the school. Audition times for these students will be existing “scratch” slots or they will be auditioned at the end of the instrument classification for that particular instrument.

AUDITION CENTERS ASSIGNED

Schools must attend the audition center serving their district. Counties appearing in **bold** represent changes for the 2001-2002 year.

Northwest: Storm Lake; Mgrs: Frank Hoskins, Band Dir.; Jeff Tollefson, Vocal Dir.; Carol Peterson, Orchestra Dir

Counties: Buena Vista, Calhoun, Cherokee, Clay, Dickinson, Emmet, **Humboldt**, Ida, **Kossuth**, Lyon, O'Brien, Osceola, Palo Alto, Plymouth, Pocahontas, Sac, Sioux, **Webster**, Woodbury.

North Central: Hampton; Mgrs: Leon Kuehner, Band Dir.; Bonnie Stewart, Vocal Dir.

Counties: **Black Hawk**, Bremer, Butler, Cerro Gordo, Chickasaw, Floyd, Franklin, Grundy, Hamilton, Hancock, Hardin, Howard, Marshall, Mitchell, **Tama**, Winnebago, Worth, Wright

Northeast: Oelwein; Mgrs: Douglas McFarlane, Band Dir; Frank Brigham, Vocal Dir.

Counties: Allamakee, Benton, Buchanan, Clayton, Delaware, Dubuque, Fayette, Jackson, Jones, Linn, Winneshiek

Southwest: Atlantic; Mgr: Deron Jimmerson, Band Dir.

Counties: Adair, Adams, Audubon, **Boone**, Carroll, Cass, Crawford, **Dallas**, Fremont, Greene, Guthrie, Harrison, **Madison**, Mills, Monona, Montgomery, Page, Pottawattamie, Ringgold, Shelby, Taylor, Union

South Central: Indianola; Mgrs: Chris Crandell, Band Dir; Valerie Hagener, Vocal Dir.

Counties: Appanoose, Clarke, Decatur, Jasper, Lucas, Mahaska, Marion, Monroe, Polk, Story, Warren, Wayne

Southeast: Washington; Mgrs: Bob Youngquist, Vocal Dir; Tom Wehr, Band Dir.

Counties: Cedar, Clinton, Davis, Des Moines, Henry, Iowa, Jefferson, Johnson, Keokuk, Lee, Louisa, Muscatine, Poweshiek, Scott, Van Buren Wapello, Washington

AUDITION PROCEDURES

1. Schedules will be mailed to schools by audition managers. Should you fail to receive a schedule, contact the manager of your audition site.
2. Schools must appear at their assigned time or, when possible, earlier due to scratches unless affected by emergency situations. **Penalty:** Forfeiture of right to appear.
3. It is recommended, whenever possible, that directors “scratch” their last entry as opposed to their first. This will shorten the day for everyone.
4. Band and orchestra members will be excused only after results have been posted and music assigned. A recall hearing may be scheduled before final selection is made. A recall list will be posted at noon for clarinets, flutes and trumpets to prevent excessively long waits for students not still under consideration. Students failing to appear for recalls will be eliminated from consideration for participation. Brass, woodwind and percussion students may be assigned to band or orchestra. Do not enter students who are unwilling to accept an assignment to either group.
5. It is **mandatory** the posted names, instruments, parts, etc., be left intact and posted until the conclusion of the audition day.
6. Names of alternates selected will be posted; however, there will be **no** music issued to these students. **No alternates will be selected for participation after Tuesday, November 6.**
7. Accepted students’ names will be printed in the All-State program. Be certain they are **printed legibly** on the audition cards.
8. **Directors Note:** Housing Blanks will be mailed to registered schools in advance of auditions. Mail these to the Iowa High School Music Association, PO Box 10, Boone, IA 50036-0010, immediately following auditions. These may also be faxed (515-432-2961).

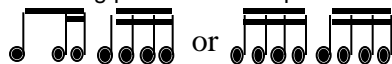
SELECTION OF THE BAND

The instrumentation of the All-State Band is as follows:

24 Flutes	6 Contra-Alto or	30 Cornet-Trumpets
6 Oboes	Contra-Bass Clarinets	24 French Horns
6 <i>E_b</i> Clarinets	12 Bassoons	18 Trombones
72 <i>B_b</i> Clarinets	12 Alto Saxophones	4 Bass Trombones
6 Alto Clarinets	6 Tenor Saxophones	12 Euphoniums
12 Bass Clarinets	6 Baritone Saxophones	12 Tubas
12 Percussion (band & orchestra)		

All brass and woodwind entries are required to audition in the following manner:

1. Play a solo of choice (need not be memorized) without accompaniment.
2. Play any of the MAJOR scales (memorized) in 16th notes at a metronome speed of quarter note = 88, (ascending and descending-play two or more octaves where possible.) A Metronome will be used **to establish tempo**. Scales **must** be performed all tongued ascending and all slurred descending **OR** all slurred ascending and all tongued descending. **NO OTHER ARTICULATION VARIATION WILL BE ACCEPTABLE!!** Either of the following patterns is acceptable:



3. Play a chromatic scale over the complete range of the instrument. Chromatic scales must be performed in 16th notes at a MINIMUM tempo of quarter note = 88. No specific articulation pattern is required.
4. Play the etudes listed below.
5. To insure instrumentation for piccolo, the following will apply: ALL 1st Flutes in band and orchestra will be required to audition on piccolo as well as flute on Thursday at ISU as a part of the chair placement procedure. Failure to comply with this requirement will automatically place those students at the bottom of the 1st Flute section.
6. To insure instrumentation for English Horn parts, the following will apply: ALL 1st oboes in band and orchestra will be required to audition on English Horn as well as oboe on Thursday at ISU as a part of the chair placement procedure. Failure to comply with this requirement will automatically place those students at the bottom of the 1st Oboe section. 2nd Oboes MAY audition on English Horn if they desire.

2001 IOWA ALL-STATE BAND AUDITION ETUDES

Flute: Selected Studies for Flute by Voxman: Pub. By Rubank, P. 24 (+ 2 lines on P. 25) & P.40

Oboe: Selected Studies for Oboe by Voxman: Pub. by Rubank, P. 9 & P. 28

Clarinet Bb & Eb : Selected Studies for Clarinet by Voxman: Pub. by Rubank, P. 33 & P. 42

Clarinet (Alto, Bass & Contra): Advanced Studies from the Works of J. Weissenborn: arr, Rhoads, Pub. by Southern, #15 (P.11) & #34 (P.28)

Bassoon: 48 Famous Studies for Bassoon by Ferling, arr. Thornton: Pub. by Southern, #30 (P. 29) & #38 (P. 36)

Saxophone: Selected Studies for Saxophone by Voxman: Pub. by Rubank, P. 28 & P. 58

Trumpet: Selected Studies for Trumpet by Voxman: Pub. by Rubank, P. 12 & P. 28
(Trumpet players selected for the All-State Orchestra are expected to perform on a trumpet, not a cornet.)

French Horn: Preparatory Melodies to Solo Work by Pottag: Pub. by Belwin, #51 (P. 20), #64 (P. 26) & #86 (P. 34).

Trombone & Euphonium: Selected Studies for Trombone by Voxman: Pub. by Rubank P. 26 & P. 47 All Euphoniums, both treble and bass clef, must play the trombone etudes. These may be rewritten into treble clef, if desired. The Concert Key (Sounding Pitch) must be maintained.

Bass Trombone: 24 Studies for Bass Trombone-Grigoriev/Ostrander: Pub. By International Music: #16 (P. 18) & #22 (P. 24) **NOTE:** In order to audition for this position, players must use an instrument with the minimum equipment of an "F" attachment and a .525 or larger bore size. Equipment not meeting this standard is not acceptable and the student will not be allowed to audition!

Tuba: 70 Studies by Blazhevich, Vol No. 1: Pub. by Robert King #3 (P. 3) & #40 (P. 48 & 49) If selected for participation, All-State Tuba Players are expected to use/borrow an upright tuba as opposed to a bell-front tuba or sousaphone.

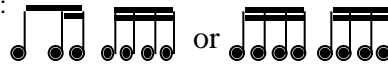
Percussionists: The All-State percussion audition will consist of the following:

(I) Basic Technique

Keyboard Percussion:

1. Play any of the major scales, ascending and descending, two octaves (memorized) in 16th notes at a set metronome tempo of quarter note = 88.

Either of the following patterns is acceptable:



2. Play a chromatic scale (memorized) the full range of the instrument, ascending and descending, in 4 - 16th notes at a minimum tempo of quarter note = 88.
3. Demonstrate proper grip and stroke.
4. Demonstrate correct tone to include proper playing area and choice of mallets.

Snare Drum:

1. Play a multiple bounce (orchestral) roll at the performers maximum controlled speed from soft to loud to soft.
2. Play a double stroke (rudimental) roll from slow to fast to slow at a constant volume.
3. Demonstrate proper grip and stroke.
4. Demonstrate correct tone to include tuning of batter and snare heads, proper snare strainer tension, proper playing area, and choice of sticks.

Timpani: [Tuning gauges are not to be used.]

1. Perform a glissando roll ascending and descending.
2. Tune to a required pitch.
3. Demonstrate proper grip and stroke.
4. Demonstrate correct tone to include proper playing area and choice of mallets.

Crash Cymbals:

1. Perform crashes at various volume levels.
2. Demonstrate proper angle/position/grip.

Triangle:

1. Perform rolls.
2. Demonstrate correct tone to include proper playing area.
3. Single strokes at p, mf, f.

Tambourine:

1. Perform shake and thumb rolls.
2. Demonstrate correct tone to include proper angle, grip, and stroke

(II) Required etudes for snare drum, timpani, and keyboard percussion:

Snare: Portraits in Rhythm by Cirone: Pub. by Belwin, #30 (P.32)

Timpani: The Solo Timpanist by Firth: Pub. by C Fischer, #11 (p.7) (TUNING GAUGES ARE NOT TO BE USED!)

Mallet: Masterpieces for Marimba by McMillan: Pub. by Warner Bros. P.28 & 29 (Start at "C" and play to the end)

(III) Solo or etude of choice performance on the percussion instrument (snare drum, timpani, or keyboard percussion) which represents the performance medium of greatest skill, talent, and confidence. THE SOLO/ETUDE IS NOT TO EXCEED ONE MINUTE, THIRTY SECONDS IN LENGTH.

DIRECTORS: If you believe you find errors in these etudes, mail a copy of the etude noting the error and the correction to: John Aboud, All-State Band Chair, Algona High School, 600 S. Hale St., Algona IA 50511.

Directors - Be certain students have the music for chair placement auditions in Ames adequately prepared. Failure to perform the selections at All-State level will result in dismissal from the group.

SELECTION OF THE ORCHESTRA

1. String auditors will select the following strings for the All-State Orchestra:

40 1st Violins	24 Violas	16 String Bass
40 2nd Violins	24 Cellos	Harp
2. Band auditors will select the following instruments for the All-State Orchestra:

6 Flutes (1 to play piccolo)	1 Bass Clarinet	2 Bass T-bones
6 Oboes (1 to play Eng. Horn)	6 Bassoons	8 French Horns
6 Clarinets	6 Trumpets	2 Tubas
	4 Trombones	
3. The number of strings to be selected at each center is determined by the All-State Orchestra Chair after all entries have been received.
4. All string entries will be required to audition in the following manner:
 - a) Play a solo or etude of their own choosing.
 - b) Play the required excerpts of the All-State selections (These works are in public domain or variances have been allowed for this use. String audition excerpts are available from the IHSMA office after August 1. They will be forwarded directly to the school upon registration **or** may be obtained prior to registration by calling the IHSMA office and requesting same.)
 - c) **Violins, Violas, Cellos:** Play any of the **major** scales (memorized) up to and including 5 flats and 5 sharps in 16th notes at a metronome speed of a quarter note = 88 (ascending and descending). A scale of 3 octaves is required for violin and cello. Violas - 3 octaves required for C, Db, D, Eb, and E. F, G, Ab, A, Bb and B are optional, either 2 or 3 octaves. **Style of bowing is at the discretion of the performer.**
 - d) **String Bass:** Play any of the **major** scales (memorized) up to and including 5 flats and 5 sharps in 16th notes at a metronome speed of a quarter note = 76, **ascending and descending.** A minimum of 2 octaves is required for scales E through A; one octave and a fifth for scales Bb through Eb. Style of bowing is to be at the discretion of the performer.
5. Harpists should prepare an audition tape and send it, postmarked by October 17, to Bruce Eilers, West High School, 425 E. Ridgeway, Waterloo, IA 50702-5089. Students selected will be notified by phone. The tape should contain the following:
 - a) A two-minute portion of a solo or etude of their choice
 - b) The excerpts that are available from the IHSMA office
 - c) Label showing the student's name, school and phone number

Directors - Be certain your students have the music for the festival adequately prepared for the chair placement auditions in Ames. Failure to perform the selections at All-State level will result in dismissal from the group.

SELECTION OF THE CHORUS

NOTE: Correction to All-State Vocal Music Instructions

The printed instructions accompanying your music contain an error. #5 under "Untraveled Worlds" should read **mm. 81-84**, not 181-184.

1. Each entry must consist of 2, 3, or 4 singers - one voice on each of the following parts: Soprano, Alto, Tenor, Bass. Each entry must have at least two singers.
2. The maximum number of entries for one school is 28 students - 7 singers per voice part. A student may appear in **one** entry only. Music need not be memorized for auditions.
3. The number to be selected on each part at each audition center will be based on a percent of the total number entered from the entire state. A total of 600 voices will be selected - 300 females and 300 males. Female students will not be accepted on T/B parts; male students will not be accepted on S/A parts. Auditors will be instructed to select only clearly qualified singers regardless of quotas.
4. Auditioning ensembles will be identified to the auditor by ONLY: school code number, entry letter, names of singers and voice parts. **Be certain your students know their ensemble letter!**
5. Audition sites will post a list of accepted students and a list of singers to be recalled at the conclusion of the initial auditions.
6. Materials to be used for auditions will be posted at each audition site at 7:30 A.M. on October 20, 2001.
7. Vocal directors may **not** enter the audition room.
8. All vocal auditions are a cappella.
9. For first round auditions, singers may get their starting pitches from:
 - a.) A singer in the ensemble using a pitch-pipe to play pitches;
 - b.) A singer in the ensemble playing pitches on a keyboard;
 - c.) A high school student, who is not a member of the auditioning ensemble, playing the pitches on a keyboard.
10. Each entry will be instructed to sing portions of the chosen All-State selections. A maximum of 7 minutes will be allotted for each audition. Students will be judged on the following factors: Intonation, rhythm, tone quality, and musicianship with strong consideration of dynamics and articulation.
11. All selections must be performed in the designated key.
12. For recalls, singers appear alone and sing their voice part unaccompanied. Pitches for recall will be given by a person designated by the audition manager. The pitch-giver will provide the starting pitch, the chord at the entrance, and then repeat the starting pitch.
13. In the interest of balancing sections, accepted vocalists will be posted as either I or II. Should this be a change, the accepted vocalist is expected to learn the new part by the dates of the festival.
14. Vocal entries must appear as registered. Illness or emergency circumstances may reduce an entry below the original registration, however a school may increase the number of participants only by following the provisions specified in Errors In Registration (P.12)
15. Director's sets/Accompanists sets of the All-State music are a responsibility of the district and must be paid for by the director/district apart from their All-State registration.

16. Auditioning groups may be asked to audition on the Jordan/Ballenger arr. of "America the Beautiful" and the Wilhousky arr. of "The Battle Hymn". Copies of these selections may be purchased by contacting Jay's Music (800-798-5555).
17. Soloist Information: There will be a soloist chosen for "My God Is a Rock". Interested candidates should record m. 45-56 and m. 73-89. Please send tapes to: Dr. Greg Grove, City High School, 1900 Morningside Dr., Iowa City, IA, 52245. Singers say only their name on the tape, (NOT the school's name) before they sing. If multiple singers are on one tape, please number the singers, and have them say their number and their name. On the outside of the tape, write the school name AND singers name(s) and number(s). i.e. Jim Jones #1, John Smith #2 etc. All tapes must be hand delivered or postmarked by Wednesday, October 24, 2001, to City High School. **NO LATE TAPES WILL BE ACCEPTED.** A compilation tape will then be sent to a minimum of two adjudicators, who do not have any singers auditioning. Their scores will be tabulated and averaged. Based on their scores, a maximum of 15 singers will be chosen to sing for Mr. Bagley in Ames, on Thursday evening, Nov. 15.

ALL-STATE PIANIST

Students auditioning for All-State Pianist must be an eligible member of the school's band, chorus or orchestra. Two pianists will be selected to accompany the chorus.

The registration fee of \$10.00 does **NOT** cover the cost of the music for accompanist candidates. Schools will need to make their own arrangements for the music, including the patriotic numbers.

FIRST ROUND AUDITIONS:

The first round auditions will be held at each of the six district audition sites. Registration forms for auditions have been mailed to each school. Auditions are **SATURDAY, OCTOBER 20, 2001, AT 8:00 A.M.**

Following are the requirements for the first round auditions:

1. The excerpts of the keyboard parts which are to be played will be posted at 7:30 a.m.
2. Each candidate **MUST** prepare all of the keyboard parts of each All-State chorus selections, including the patriotic numbers. Candidates are to take all selections into the audition center.
3. The candidate **MAY** use a **STUDENT PAGE-TURNER** in the audition.
4. The candidate may take 5-10 seconds to familiarize him/herself with the piano in the audition center.
5. The auditor will conduct the candidate on the designated excerpts.
6. The ability to play the keyboard parts **ACCURATELY** and at the **REQUIRED TEMPO** plus the ability to **FOLLOW A CONDUCTOR** will account for 75% of the final score.
7. For the remaining 25% of the final score, candidates will be evaluated on their facility to serve as a **REHEARSAL ACCOMPANIST**. Each will be tested on the ability to quickly locate and to accurately play, pitches (bottom to top).
8. The candidate will not be required to play the open score.
9. The auditor is not **REQUIRED** to select any candidate for the second round, but may select one or two pianists if the quality exists. Candidates selected on the first round will be posted during the morning session.

SECOND ROUND AUDITIONS

Candidates selected for the second round **MUST** be available for the final selection process, which will be held at **11:30 A.M., WEDNESDAY, OCTOBER 24, 2001, at Recital Hall, Iowa State University, Ames.** Please refer to numbers 2 through 8 in the First Round Audition. **Auditions are closed to the public.** Details regarding auditions will be sent to each candidate. Two accompanists will be selected to accompany the All-State Chorus.

EXCEPTIONS

Selection of band, orchestra and chorus is based on the assumption competent players and singers are available. Auditors will be instructed to fill the quota for each center only with students who measure up to required standards.

ALL-STATE FESTIVAL/FOOTBALL PLAY-OFF CONFLICTS

Conflicts between the All-State Music Festival and the state Football Play-Offs are unavoidable. Policies have been developed to resolve those conflicts within reasonable parameters. "Alternates" may be selected to fill positions in any All-State organization as late as November 6. If your district has a potential problem with such a situation, contact the IHSMA office at your earliest opportunity.

HOUSING RULES AND REGULATIONS

The rules and regulations have been established by the Iowa High School Music Association and will be strictly enforced. **Directors and chaperones have no authority to grant exceptions.**

AMES ARRANGEMENTS

Housing: Alan S. Greiner, Executive Director, IHSMA, is in charge of hotel arrangements. Housing blanks are to be returned to the Iowa High School Music Association, PO Box 10, Boone, IA 50036-0010, or may be faxed (515-432-2961) after auditions.

1. Chaperones must be housed in the same hotel as their students.
2. There shall be no playing of instruments or singing from 11 p.m. to 8:30 a.m.
3. Participants may meet only in rooms assigned to their sex unless a director is present. Participants will be dismissed from the All-State Festival if this rule is violated.
4. Students are not to congregate in rooms other than those billed to their own schools.
5. Students **must** be in their rooms no later than 11:30 P.M. each night. **Lights out and no noise after 12 midnight.**
6. Inadequate preparation, poor rehearsal attitudes and conduct not up to the highest standards of our best high school students will be considered sufficient reason for dismissal from the festival.
7. Consider prepayment of festival fees. This will shorten the registration process at Ames. Fees should be received in the IHSMA office by November 9.

REGISTRATION OF STUDENTS IN AMES

All directors or chaperones must register participating students and pay the correct fees, if not prepaid, at the IHSMA Registration desk (middle floor lobby of Scheman Building) either Thursday afternoon or Friday morning. Student registration forms will be sent prior to auditions. When the **student registration form** is presented, (with correct

fees, if not prepaid), you will receive identification buttons for participants. **No student will be admitted to afternoon rehearsals without these buttons.** Schools commuting must be registered in the same manner; names listed on the registration form and fee paid, with a notation that they are not registered in motels.

CHAIR-PLACEMENT AUDITIONING PROCEDURES

All-State Orchestra: All orchestra members report to assigned audition rooms in the Scheman Building before 3 P.M. Thursday afternoon. Warm-ups begin at 2:40 P.M. Room assignments will be included in the students music folders. Members will be auditioned down to the last chair. **Don't forget music stands and pencils for rehearsals!!**

All-State Band: All band students report to Benton Auditorium in the Scheman Building before 5:00 p.m. Thursday. Announcements will be made promptly at 5:00 p.m. Members will be auditioned to the last chair. **Don't forget music stands and pencils for rehearsals!!**

Students found inadequately prepared at the Thursday chair-placement auditions will be permitted a re-hearing before a panel of three auditors at 8 A.M. Friday. Every effort will be made to have either a director or school representative present so dismissal, if necessary, can be attended to by the director/representative.

All-State Chorus: Seating assignment cards will be placed in registration packets. Directors MUST obtain these prior to the first scheduled rehearsal.

REHEARSALS

All groups will meet Friday morning at the following locations:

BandHilton Coliseum
OrchestraScheman Building, Rooms 220-240
ChorusC.Y. Stephens

Rehearsals are also held Friday afternoon and evening and Saturday morning and afternoon. Attendance will be carefully checked at each rehearsal. **Failure to attend all rehearsals will eliminate students from participation.** Rehearsal schedules are interpreted as the actual starting time. Students should be in place at the designated time. **No caps or hats are permitted at any rehearsal.**

TICKETS

The ticket price will be \$10. **All seats are reserved.** A group rate of \$9 per ticket will be available on orders of 20 or more tickets ordered by a single purchaser. Send ticket orders to Iowa State Center, Ames, IA 50011. All orders received prior to October 22 will be held and processed on that date.

ILLNESS

The All-State Chair must be notified if illness should prevent participation in the All-State groups. Band members, or their director, should **telephone** John Aboud, Algona High School; Orchestra members, or their director, should **telephone** Bruce Eilers of West High School of Waterloo. Chorus members, or their director, should **telephone** Dr. Greg Grove, City High School, Iowa City.

CONCERT DRESS

Band members will wear their uniforms. Orchestra women will wear long dresses and men will wear suits (formal black). Chorus members **must** wear choir robes.

REHEARSAL SCHEDULES

The specific rehearsal schedule for each of the All-State ensembles will be mailed to auditioning schools prior to auditions. Check this very carefully. Any All-State Chorus student who is late to rehearsal will check-in with the All-State Chorus Chair. He/she will not rejoin the chorus but will sit with their director at the back of the chorus for the remainder of that rehearsal block of time. They may rejoin the chorus for the next rehearsal. A second incident of tardiness will result in automatic disqualification. Attendance policies for the band and orchestra will be included in the folders of students accepted.

MISCELLANEOUS ARRANGEMENTS

1. **Complimentary Tickets:** Complimentary tickets for directors of participating students will be issued on the following basis: One ticket will be issued for each department represented in the All-State Festival ensembles; i.e., vocal = 1 ticket; orchestra = 1 ticket; band = 1 ticket. If a string player is accepted from a school without an orchestra program, a complimentary ticket will be awarded to the band program **ONLY** if that program had no players chosen for band. No director is entitled to more than a single complimentary ticket nor any district more than a total of three. Call the Association office if you have questions. **All seats are reserved.** Schools are responsible for securing tickets for drivers, chaperones, spouses of directors and student teachers.
2. Check your calendar carefully. Do not enter students who may have a conflict with any activity. Each student must be available for all rehearsals in Ames.
3. If your school is to be represented in Ames, you will receive a final mailing containing students' names (for you to proof for spelling), directors' responsibilities, complete rules and regulations, and a map of the Iowa State Center area.

SHOW-JAZZ CHOIR/JAZZ BAND FESTIVAL

Show-Jazz Choir/Jazz Band Festivals are scheduled as follows:

Jazz Band Festival - Classes 3A, 1A, A - January 12, 2002

Show-Jazz Choir/Jazz Band Festival - Classes 4A, 2A - January 26, 2002

Show-Jazz Choir Festival - Classes 3A, 1A, A - January 28, 2002

Registration forms, regulations and adjudication forms for these festivals will be mailed to member schools the early part of November.

PIANO FESTIVAL

February 9, 2002

Registration forms will be mailed in early November. The **deadline** date for entry is December 6, 2001; **penalty deadline** is December 13, 2001.

Rules and Regulations

1. A fee of \$9 will be charged for each entry.
2. Schools may have an unlimited number of participants.

3. All entry fees should be sent to Alan S. Greiner, Executive Director, Iowa High School Music Association, PO Box 10, Boone, Iowa 50036-0010.
4. A master adjudication form will be mailed directly to schools by the IHSMA.
5. Piano adjudication forms must be completed in every detail - school name, soloist, selection, and be mailed **first-class to your festival manager by January 30, 2002. Do not send adjudication forms to the IHSMA.**
6. The solo(s) will be performed from memory.
7. A copy of the score(s) will be provided for the convenience of the adjudicator. All measures must be numbered. A performance will not be permitted for participants that do not comply with this regulation. Copies are not permitted. Judges will withhold the rating for all performances employing illegally duplicated scores. These performances will be disqualified by the Executive Director.
8. Time limit is 5 minutes. There is a 2 1/2 minute minimum performance time which will be penalized at the rate of 1 point for every 15 second segment of violation.
9. Soloists must be eligible high school students (grades 9-12).
10. Only member schools can register participating students.
11. The rating system employed for this festival will be: Division I, II, III, IV, V - Superior, Excellent, Good, Fair, Poor.
12. The host site will send a schedule to each participating school.
13. A 15 second warm-up period will be permitted on the center piano to allow the students to determine the touch and feel for the instrument.
14. Adjudicators may speak with participants for a brief moment at the conclusion of their performance.

Site information will be included with registration forms in a November mailing.

APPROVED INTRASTATE MUSIC COMPETITIONS

Event	Location	Date	Type
Keokuk Labor Day Parade	Keokuk	Sept 3	IHSMA
Hot Air Balloon Marching Band Contest	Creston	Sept 15	IHSMA
Ayr Days Parade	Mount Ayr	Sept 22	IHSMA
Muscatine Marching Festival	Muscatine	Sept 22	IHSMA
Octoberfest	Marshalltown	Sept 22	IHSMA
Bands Across the Prairie	Cedar Rapids	Sept 22	IHSMA
Algona Band Day (Parade/Field)	Algona	Sept 29	IHSMA
Carroll Band Day	Carroll	Sept 29	IHSMA
Little Hawk Marching Band Invitational	Iowa City	Sept 29	IHSMA
Octoberfest of Bands	Maquoketa	Sept 29	IHSMA
SW Iowa Band Jamboree	Clarinda	Sept 29	IHSMA
Urbandale Marching Festival	Urbandale	Sept 29	IHSMA
LoessHills Fieldfest	Glenwood	Oct 6	IHSMA
Valleyfest XXII	W Des Moines	Oct 6	IHSMA & OPEN
Wilton Festival of Bands	Wilton	Oct 6	IHSMA
UNI Homecoming Parade	Cedar Falls	Oct 13	OPEN
Mid-Iowa Band Championships	Ankeny	Oct 13	IHSMA
Central Iowa Drumline Contest	Ankeny	Oct 23	OPEN
Morningside Jazz Festival	Sioux City	Feb 7-9	IHSMA
Bluffs Jazz Festival	Council Bluffs	Feb 9	IHSMA

APPROVED INTRASTATE MUSIC COMPETITIONS

Event	Location	Date	Type
Jack Oatts Jazz Festival	Earlham	Feb 9	IHSMA
Coe College Jazz Summit	Cedar Rapids	Feb 22-23	IHSMA
Lewis Central Invitational	Council Bluffs	Feb 23	IHSMA & OPEN
Fort Madison Show Choir Contest	Fort Madison	Mar 2	IHSMA & OPEN
NEIBA Jazz Festival	Marion	Mar 2	IHSMA
SEIBA Jazz Festival	Iowa City	Mar 2	IHSMA
Emmetsburg Invitational Show Choir Contest	Emmetsburg	Mar 2	IHSMA
Washington Show Choir Invitational	Cedar Rapids	Mar 9	IHSMA & OPEN

TEACHER TENURE AWARD

The Iowa High School Music Association has developed a Teacher Tenure Award to recognize persons who have spent a significant number of years instructing Iowa high school musicians. To be eligible for this award, teachers must have completed 30, 35, or 40 years of contracted high school music instruction **in the state of Iowa** or any year in excess of 30 upon notification of intentions to retire. This Tenure Award certificate will also be awarded for individual year increments in excess of 40 years. Upon submission of a letter of verification attesting to the years of experience signed by both a high school administrator and the director, an appropriate certificate will be presented at the All-State Festival Concert. The letters of verification must be received in the IHSMA office by October 1 in order to receive the award at the coming festival.

CONSTITUTION OF THE IOWA HIGH SCHOOL MUSIC ASSOCIATION Amended January 1996

ARTICLE I

Name

Section 1. This Association shall be known as the Iowa High School Music Association.

Purpose

Section 2. It shall exist for the purpose of furthering interest and establishing standards in all forms of high school music.

Membership

Section 3. Only high schools accredited or approved by the State Department of Education and meeting the requirements of this Constitution are eligible for membership in this Association.

Junior high schools are not accepted for membership in this Association. Students enrolled in a junior high school may participate under the auspices of the senior high schools of the school district in which it is located. In case the district includes more than one senior high school, the Superintendent of the school shall designate the high school with which the junior high school is to be affiliated for participation in the activities of the Association.

Annual Meeting

Section 4. The Annual Meeting shall be held during the month of July. Special meetings may be called by the Executive Committee.

**ARTICLE II
Festivals**

Section 1. The Executive Committee shall have authority to arrange such festivals as they may deem necessary.

**ARTICLE III
Dues**

Section 1. Annual dues of \$25 shall be sent to the Executive Secretary of the Association on or before September 15. Dues shall be \$37.50 (\$25 dues plus \$12.50 penalty) until January 1. After January 1, schools will not be admitted for membership. The postmark on the envelope containing the letter shall determine the date the fee is received.

**ARTICLE IV
Administration**

A. Executive Committee: Nomination and election, powers and duties.

Section 1. The Executive Committee composed of 5 members shall be elected at-large for a 5-year term: Three members of the committee shall be Superintendents or Principals of senior high member schools; one member shall represent the instrumental field and one member shall represent the vocal field of senior high member schools.

Note: The Executive Committee has an additional member appointed by the State School Board Association. This is to meet the new statute 257.25, Chapter 9.4, Code 1966. The total membership of the committee is 6.

Section 2. A member of the Executive Committee shall be eligible to succeed himself but once.

Section 3. Only the Superintendent or his delegated senior high school Principal shall have the right to vote in the nomination and election of Executive Committee members.

Section 4. Nomination and Election - When an election is to take place, the Executive Secretary of the Iowa High School Music Association shall mail an official nomination ballot to each member school by September 10th. This ballot shall be a secret ballot enclosed in a blank envelope, sealed and mailed in an official mailing envelope provided for that purpose. These sealed ballots, when voted, shall be mailed to the member of the District Advisory Group from the North Central District, who shall serve as the chairman of the Election Board. The election chairman and the Executive Secretary shall select a music teacher or administrator from the chairman's school to complete the Election Committee.

On or before September 15, the Election Board shall meet for the official canvass of the ballots. The official mailing envelopes shall be opened in the presence of the Election Board and the sealed ballots removed and placed in a ballot box. After having been thoroughly mixed, the sealed ballots shall be opened, counted and the results announced. The two receiving the highest number of votes shall be considered the nominees. In case of a tie of more than two, all those in the tie shall be considered nominees. In case the number of nomination ballots for any one of the nominees is a majority of the number of member schools, he shall be declared elected.

A list of schools voting shall be made from the return on the official mailing envelopes, and together with the results of the election, be certified by the Election Board conducting the election and forwarded to the Executive Committee for publication in the next regular

bulletin. A place shall be provided on the official mailing envelope for the signature of the school official casting the vote. The signature must be on the official mailing envelope in longhand.

The Executive Secretary shall then prepare official election ballots and mail immediately to the member schools. These ballots shall be the same kind as those used for nominations and, when voted, shall be mailed to the same Election Board Chairman who received the nomination ballots, except when he is a candidate; then the Executive Committee will designate another District Advisory Member to receive the ballots. On or before October 10, the Election Board shall meet to canvass the election ballots. The procedure in canvassing shall be the same as in canvassing nomination ballots. The person receiving the highest number of votes shall be declared elected. A list of schools voting shall be made from the return of the official mailing envelopes, and together with the results of the election, certified by the Election Board conducting the election and forwarded to the Executive Committee for publication in the next regular bulletin of the Music Association. In case of a tie, election shall be decided by lot by the candidates in the presence of the Executive Committee.

Beginning in 1966 and in subsequent years a member shall be elected to succeed the following members of the Executive Committee whose terms will expire at the times indicated below:

IASB	Janice Merz	2001	Tim Peterson
2002	Frank Brigham	2003	Thomas Nugent
2004	Steve Colton	2005	Tom Dannen

Item 1. The terms of the present committee members shall be extended to correspond with the schedule of elections indicated above.

Section 5. Each newly-elected officer becomes a member of the Executive Committee upon notification from the Executive Secretary of his/her election.

Section 6. A vacancy will occur whenever a member of the Executive Committee ceases to be an executive officer or a teacher of music, as earlier defined, of a member senior high school. In case of a vacancy, the Executive Committee shall conduct an election in the prescribed manner within two weeks (except during the summer) after the vacancy has occurred to fill and complete the unexpired term. When a vacancy occurs during the summer vacation, the Executive Committee may, at its discretion, delay an election to fill the vacancy until the regular time in the fall.

Section 7. At their October meeting, the Executive Committee shall elect a President, Vice-President and Treasurer from its membership for a term of office for one year. Other officers may be elected by the Executive Committee from within its own group to carry on the business of the Association.

Item 1. The President of the Executive Committee shall, in addition to his regular duties, preside at all meetings of the District Advisory Group.

Item 2. Three members of the Executive Committee shall constitute a quorum for any meeting.

Powers and Duties of the Executive Committee

Section 8. The Executive Committee shall have the following powers and duties.

a. The Executive Committee shall annually negotiate for an extension of the agreement with the Iowa High School Athletic Association to act as a service agent for the Music Association in accordance with the provisions set forth in the resolution adopted by

the Music Association on November 14, 1965, and amended on January 14, 1966. Modifications from the original resolution may be made from time to time by mutual agreement of both Executive Boards or the Executive Committee may, at its discretion, determine other conditions under which its Executive Secretary may serve.

b. The Executive Committee shall have general supervision over all music festivals and related music activities of member schools.

c. It shall interpret the rules of the Association.

d. It shall provide for and supervise the purchase of suitable awards by member schools for participants.

e. It shall decide all protests and shall fix the penalty unless otherwise provided in the rules.

Section 9. The Executive Committee shall present a full report of all official business through a bulletin distributed to all members of the Association. The Executive Secretary and Treasurer shall present a financial statement to the Association at the annual July meeting, together with an audit by a Certified Public Accountant of the previous fiscal year. An Audit Committee consisting of 3 to 5 representatives of member schools shall be appointed by the President if such action is requested.

Section 10. In matters not herein determined, the Executive Committee shall have absolute authority.

Section 11. The Executive Committee may create and place on interest a sinking fund, which shall be used only to pay a deficit in the finances of the Association, unless otherwise specifically designated for other use by the electorate.

Section 12. The Association, acting by and through the Executive Committee, may accept contributions and bequests for the purpose of awarding scholarships that conform to the standards promulgated by the Internal Revenue Service and the Iowa Department of Revenue. The requirements and qualifications of the scholarship award will be communicated annually to the member schools.

B. District Advisory Group: Nomination and election powers and duties.

Section 1. There is hereby created a District Advisory Group and for the purpose of election and administration of said District Advisory Group, there shall be 6 districts as at present provided.

(The Districts as established at the time of this proposed constitutional change are as follows:)

Northwest District comprising the following counties: Buena Vista, Carroll, Cherokee, Clay, Crawford, Dickinson, Ida, Lyon, Monona, O'Brien, Osceola, Plymouth, Sac, Sioux, Woodbury.

North Central District comprising the following counties: Butler, Calhoun, Cerro Gordo, Emmet, Floyd, Franklin, Grundy, Hamilton, Hancock, Hardin, Humboldt, Kossuth, Mitchell, Palo Alto, Pocahontas, Webster, Winnebago, Worth, Wright.

Northeast District comprising the following counties: Allamakee, Benton, Black Hawk, Bremer, Buchanan, Chickasaw, Clayton, Clinton, Delaware, Dubuque, Fayette, Howard, Jackson, Jones, Linn, Tama, Winneshiek.

Southwest District comprising the following counties: Adair, Adams, Audubon, Cass, Fremont, Guthrie, Harrison, Mills, Montgomery, Page, Pottawattamie, Ringgold, Shelby, Taylor, Union.

South Central District comprising the following counties: Appanoose, Boone, Clarke, Dallas, Decatur, Greene, Jasper, Lucas, Madison, Marion, Marshall, Monroe, Polk, Story, Warren, Wayne.

Southeast District comprising the following counties: Cedar, Davis, Des Moines, Henry, Iowa, Jefferson, Johnson, Keokuk, Lee, Louisa, Mahaska, Muscatine, Poweshiek, Scott, Van Buren, Wapello, Washington.

Section 2. Any certified employee serving as a high school administrator or high school music instructor is eligible to be elected to the District Advisory Group.

Section 3. A District Advisory Group member shall be eligible for only one elected term in office.

Section 4. Only the Superintendent or his delegated Principal of the senior high school shall have the right to vote in the nomination and election of District Advisory Group members.

Section 5. The term of office for members of the District Advisory Group shall be for 3 years. The areas of representation shall be rotated so that each district will be represented, in turn, by an administrator, an instrumental music director and a vocal music director. Beginning with the 1981 election, the Southwest District shall elect an administrator, the South Central District shall elect an instrumental music director and the Southeast District shall elect a vocal music director. The 1982 election shall direct the Northwest District to elect an instrumental music director, the North Central District shall elect a vocal music director and the Northeast District shall elect an administrator.

Section 6. Procedures for nomination and election of members to the District Advisory Group shall be identical to that prescribed in the nomination and election of members to the Executive Committee, except that members to the District Advisory Group shall be elected by Districts and voting shall be by Districts and not at-large.

Section 7. The District Advisory Group shall meet with the Executive Committee at their October and April meetings. The Executive Committee may call other meetings of the Advisory Group.

ARTICLE V State Festivals

Section 1. The State Festivals shall be held on dates established by the Iowa High School Activities Federation.

Section 2. Registration for any Association festival must be completed by at least 30 days prior to the festival in which the school is participating.

Program and Certification

Section 3. The certification of eligibility of participating pupils must be sent to the Executive Secretary with the official registration.

Judges for Festivals

Section 4. All judges will be selected and employed by the Executive Committee. No person shall be selected for a judge for an event who has coached any of the participants, or who is in any way connected with the schools represented by the participants.

All solo and small group events shall be judged by one judge. The Executive Committee shall determine the appropriate number of judges required by each of the large group events.

Rating of Participants

Section 5. All large group programs of the Association shall employ the Group Rating plan as hereinafter defined.

Each of the judges shall indicate a rating or numerical score on the adjudication form for each participant which shall be the estimate of the quality of performance by comparison with the best amateur standards of the event judged and the class of school represented.

The ratings to be used are described as follows:

Division I Division II Division III Division IV Division V

Judges shall be expected to give as much constructive criticism as possible on the performance of each participant.

The score given each participant shall not be regarded as a ranking but as a rating and the distribution of scores will depend upon the general level of performance in the event.

Judges shall not be permitted to confer with each other or with any unauthorized person until they have completed their evaluation of the performance. NOTE: The festival manager and officers of the Association are authorized persons.

The festival manager shall tabulate the ratings given each participant and this combination shall determine the final group rating of the participant according to the following rating combinations which will place a participant in:

Division I: (1-1-1) (1-1-2) (1-1-3) (1-1-4) (1-1-5)

Division II: (1-2-2) (1-2-3) (1-2-4) (1-2-5) (2-2-2) (2-2-3) (2-2-4)(2-2-5)

Division III: (1-3-3) (1-3-4) (1-3-5) (2-3-3) (2-3-4) (2-3-5) (3-3-3) (3-3-4) (3-3-5)

Division IV: (1-4-4) (1-4-5) (2-4-4) (2-4-5) (3-4-4) (3-4-5) (4-4-4) (4-4-5)

Division V: (1-5-5) (2-5-5) (3-5-5) (4-5-5) (5-5-5)

Festival managers shall not announce the rating combinations given each participant since this would defeat the purpose of the Group Rating Plan. This information, together with the comments of the judges, may be either delivered to an official representing each participating school at the conclusion of the program or mailed to that official following the completion of the program.

The right to appear for criticism only will be a determination of the Executive Committee and may vary within the different programs.

Festival Reports

Section 6. A complete report giving the final ratings of all participants must be mailed to the Executive Secretary of the Association by the manager of each festival promptly following the completion of the event.

ARTICLE VI

Eligibility

Section 1. Junior-Senior High School pupils must be doing passing work in 20 semester hours and must have done 20 semester hours passing work the preceding semester to be eligible to participate in the festivals of the Iowa High School Music Association. Grade pupils must be currently passing 3/4 of their academic subjects and must have passed in 3/4 of their academic subjects the preceding semester to be eligible.

The maximum period of eligibility while in grades 7 and 8 shall be 4 semesters. The maximum period of eligibility while in grades 9 through 12 shall be 8 semesters. Pupils below the 9th grade may not participate in solo events.

A student shall be ineligible for participation after he/she has attained their 20th birthday.

Pupils shall be eligible in the school serving the area of their official residence or where assigned by the County Board. Pupils not attending a school serving their official residence or where assigned by the County Board must receive special permission of the Executive Committee to be eligible to participate in the programs of this association.

A soloist, except piano, must be a member of the appropriate high school musical organization, if such exists, and must appear with that organization if it participates in any of the programs of the Association.

Classification

Section 2. The classification of member schools shall be determined by the Executive Committee and reviewed on an annual basis. The Association shall use the current year's official 9-11 enrollment as reported on the BEDS document to the IHSAA to determine classifications for the ensuing year. There will be a minimum of four classes which will divide the membership into classes of relative equal opportunity for students. Classifications are as follows:

Class 4A: 9-11 enrollment of 600 or more students

Class 3A: 9-11 enrollment of 300-599 students

Class 2A: 9-11 enrollment of 175-299 students

Class 1A: 9-11 enrollment of 125-174 students

Class A: 9-11 enrollment of less than 125 students

Each school shall enter the class where it belongs as shown by the above classification except as hereinafter provided. A school may elect to participate in the class next highest in enrollment, in which case it shall participate in that class in each event it enters. The choice to enter a next higher classification shall not be made later than the time of submitting the fall registration of events to the Executive Secretary.

Number of Entries

Section 3. There is an unlimited entry for member schools into the large group festival provided there is no duplication of personnel.

The number of participants or entries into the various programs of the Association will be set by the Executive Committee and may vary from program to program.

Time Limit

The time limit of each event shall be as prescribed by the Executive Committee. The time will be computed from the beginning of the first selection. An official timekeeper shall signal when the time limit has been reached. Entries who do not stop as the signal is given shall be reported to the Executive Committee by the festival manager.

If directors do not comply with this direction, they shall be reported to the Executive Committee and announcements of rating withheld.

Conductors and Accompanists

Section 4. Only a regularly employed teacher or director holding an Iowa teacher's certificate registered according to law, or an eligible student, shall be permitted to direct any participating organization. Directors of vocal groups may not sing with their organizations or may directors of instrumental groups play with participating instrumental organizations.

This shall not be interpreted to prevent a vocal director playing a piano accompaniment for a participating group.

Small groups, both vocal and instrumental, must participate without direction unless exception is provided by the Executive Committee.

The accompanist may be any person approved by the Superintendent of the member school.

ARTICLE VII Violations

Section 1. Schools violating this constitution or adopted rules, policies and regulations of the Iowa High School Music Association may be penalized, up to and including suspension from membership for one year, by action of the Executive Committee. Any suspended school will forfeit all ratings and awards received in the alleged occurrence.

Section 2. If charges are brought against any member school for violations, as generally described in Article 7, Section 1, the Executive Committee shall consider such charges and determine and assess penalties in case of conviction. Any school which is charged with such violations shall be given the opportunity to be represented at the hearing of its case before the Executive Committee. Any investigation or hearing which involves the school with which any member of the Executive Committee is connected shall not be heard in his/her presence, nor shall he/she vote on the final consideration. The decision of the Executive Committee in said matters is final.

ARTICLE VIII Disposition of Assets on Dissolution

Section 1. In the event of the termination or dissolution of this Association, then and in that event, the assets remaining after payment of the costs of termination or dissolution, shall be paid out in equal amounts to all schools which were members of the Association on the date of the commencement of such action to terminate or dissolve.

ARTICLE IX Amendments

Section 1. Amendments to this constitution may be initiated in either of the methods enumerated in this section.

1. By petition signed by the administrators of not less than 20% of the member schools.
2. By Executive Committee action.

Section 2. The Executive Committee shall submit within reasonable time all properly proposed amendments to the administrators of the member schools. The ballot shall be cast by the member school over the signature of the superintendent or principal within the time limit stated on the ballot. The proposed change shall become part of the constitution immediately if approved by a majority of the member schools voting on the proposal.

Section 3. Regulations made by the Executive Committee not contrary to this constitution shall apply to all festivals in this Association, unless rejected by the Association in the manner prescribed for voting in Article IX, Section 1 and 2 of this constitution.

Meeting Minutes

MINUTES OF EXECUTIVE COMMITTEE MEETING January 19-20, 2001

The Executive Committee of the Iowa High School Music Association met, as per call, at 9:30 A.M., Friday, January 19, 2001. Committee members present were Thomas Nugent, Villisca; Janice Merz, Fort Dodge; Steve Colton, Marion; Frank Brigham, Oelwein; Tom Dannen, Indianola; and Tim Peterson, Charter Oak. Also in attendance was Everett Johnson, Executive Secretary, who served as recording secretary. President Tom Nugent chaired the meeting.

MMS(MERZ/DANNEN) to approve the minutes of October 18, 2000, meeting as printed and distributed. PASSED

MMS(MERZ/COLTON) to approve the financial bills as submitted. PASSED

ALL-STATE FESTIVAL: The secretary presented financial reports of the All-State Festival. There were separate reports on auditions, the festival proper, video products and t-shirts. A question was raised concerning motel expenses for spouses who accompanied an auditor. The secretary is to develop wording to clarify lodging expenses are for auditor only. Placing the names of the students on the t-shirts was accepted positively, however over-projections in quantity become an unmarketable product. There was discussion about the location of the sales area including consideration of moving to the lobby areas of Hilton and C.Y. Stephens. This would place the product where the students are. This will be discussed again at the April meeting. The 2001 dates were announced as follows: Auditions – October 20; Festival – November 15-17. MMS(MERZ/PETERSON) to retain Comprehensive Sound of Greene, Iowa, as provider of audio services for the festival. PASSED MMS(MERZ/COLTON) to continue the video program with IPTV. PASSED MMS(BRIGHAM/DANNEN) to continue the T-shirt program with Bimm-Ridder of Cedar Rapids. PASSED MMS(DANNEN/BRIGHAM) to increase the conductor honorariums to \$1,250.00 for the 2001 festival and to \$1,500.00 for the 2002 festival. PASSED The secretary announced that Iowa State Center will be increasing its Public Facility Maintenance Surcharge (PFMS) to \$1.00 per ticket in 2001. Because of the increases in conductor honorariums and the PFMS assessment, ticket prices for the 2001 festival will be discussed at the April meeting. Correspondence between the association office and the Valley Independent Schools of West Des Moines regarding a disciplinary hearing that occurred during the 2000 festival was reviewed and discussed. There is a significant difference in the perceptions of what transpired. The committee stands on their November decision. John Aboud, All-State Band Chair, has requested consideration of re-districting the state for All-State auditions. The secretary will present a recommendation at the April meeting.

SHOW-JAZZ CHOIR/JAZZ BAND FESTIVAL: The secretary presented and discussed a printed financial report. Jazz Choirs continue to show growth in participation numbers. There was discussion about the limited participation of smaller schools as it relates to the lack of success by same.

PIANO FESTIVAL: The registration report indicates a continuing decline in the number of participants. IMTA and similar programs appear to have a priority for piano students, particularly in the metropolitan areas. MMS(PETERSON/MERZ) to reduce the number of districts for this festival. PASSED

SOLO-SMALL ENSEMBLE FESTIVAL: The secretary reported that progress continues on the writing of a new program to schedule this festival.

LARGE GROUP FESTIVAL: The Association was unable to secure a second Class 4A site in the central Iowa area. Valley High School of West Des Moines will host a Class 4A festival on Friday evening, May 4, for the 2nd and 3rd bands and mixed choruses of central Iowa. This situation will rectify itself in 2002.

MARCHING BAND FESTIVAL: The finalized financial report was presented and discussed. Given the effect of extremely cold weather for the October 7 festival, the program maintained a positive position in regards to both participation and finances. The IBA Marching Band Affairs Committee has met but a printed report has not been received.

ASSOCIATION ISSUES: Names of possible candidates for the National Federation Award of Merit were discussed. These will be brought to the joint DAG meeting in April for further discussion and possible recommendation. It was determined the present classification of schools is continuing to serve Iowa in an appropriate fashion. The secretary presented a plaque concept to replace the current foil certificates employed for the Academic Achievement program. A decision in this area will be made when the current supply is nearly depleted. There was significant discussion of the current penalty program. To bring consistency to all Association-sponsored festivals, MMS(MERZ/COLTON) to adopt the following penalty program: Maintain the current penalty program of 50% of registration fee to a maximum of \$25.00; add the following – if the penalty postmark deadline has passed, schools may still register for participation by paying the following: Marching Band - \$100.00 penalty per entry; Show-Jazz Choir/Jazz Band - \$100.00 penalty per entry; Large Group - \$100.00 penalty per entry; Piano/Solo/Small Ensemble – double the registration fee plus the normal penalty. These late entries will be scheduled at the convenience of the festival host. PASSED The possible replacement of the Association-owned automobile will be placed on the April agenda. At 1:58 P.M., MMS(MERZ/PETERSON) to move to closed session to conduct interviews with candidates for the position of Executive Director. PASSED The following candidates were interviewed: Jessica Paff, Des Moines; Dennis Hendrickson, Atlantic; Alan Greiner, Jefferson; Gil Lettow, Mason City; and Leon Kuehner, Hampton. At 5:28 p.m., Saturday, January 20, MMS(DANNEN/BRIGHAM) to return to open session. PASSED MMS(MERZ/PETERSON) to offer the Executive Director position to Alan Greiner. PASSED The secretary placed a call to Mr. Greiner and informed the Executive Committee of his acceptance of their offer.

With no further business to conduct, MMS(MERZ/DANNEN) to adjourn.

Respectfully submitted,

Everett D. Johnson, Executive Secretary

**MINUTES OF EXECUTIVE COMMITTEE
AND DISTRICT ADVISORY GROUP, April 18, 2001**

The Executive Committee and District Advisory Group of the Iowa High School Music Association met in the Association offices at Boone, Iowa, at 8:30 A.M., April 18, 2001. Committee members present were Tom Nugent, Villisca; Frank Brigham, Oelwein; Steve Colton, Marion; Janice Merz, Fort Dodge; Tom Dannen, Truro; and Tim Peterson, Charter Oak. District Advisory Group representatives present were Curt Ohrlund, LeMars; Kathy Nelson, Lake Mills; Stan Slessor, Waverly; Kent Klinkefus, Harlan; and Jay Nugent, Urbandale. Roger Henderson, Grinnell, was absent. Also in attendance were Everett D. Johnson, Executive Secretary, who served as recording secretary, and Alan Greiner, newly appointed Executive Director to the Association. President Tom Nugent chaired the meeting.

MMS(MERZ/COLTON) to approve the minutes of the January 19, 2001, meeting as printed and distributed. PASSED

MMS(MERZ/PETERSON) to approve the financial bills as submitted. PASSED

SHOW/JAZZ CHOIR-JAZZ BAND FESTIVAL: The secretary shared a printed registration/financial report that displayed the status of the 2001 festivals. Two Show-Jazz Choir festivals were cancelled because of inclement weather. Gate admissions were charged for the first time and reflected a high level of adult participation and support for this festival. The secretary presented for consideration a program that would eliminate the Center Expense Form for this festival and the Large Group Music Festival. That form would be replaced by providing the host site with a specific percentage of gate admissions. This concept will be re-visited in another year after reliable statistics have been formulated.

PIANO FESTIVAL: The registration report reflects a continued decline in student participation. Discussion of this concern centered on a variety of possible reasons – the lack of piano teachers, a decline in student population numbers, the increasing popularity of festivals sponsored by other organizations, and the lack of designated responsibility for piano students in member high schools. The secretary will develop a poll to be given to the participants of the 2002 festival.

SOLO/SMALL ENSEMBLE FESTIVAL: An incomplete financial report of this event was discussed. One site had to be re-scheduled due to a loss of power in the hosting community. Participation numbers continue to reflect the results of spring breaks that are scheduled in the immediate proximity of festival dates. Scheduling around spring breaks received a great deal of discussion with the Executive Committee expressing an interest

in further discussion after time for consideration. The new computer-scheduling program has not been completed but should be operational well in advance of the 2002 festivals.

LARGE GROUP FESTIVAL: The registration report was presented and discussed. Participation reflects only slight declines in all categories, however, over 85% of member schools are still participating in this festival.

MARCHING BAND FESTIVAL: The secretary presented the report of the IBA Marching Band Affairs Committee. It contained no proposals requiring action by the Executive Committee. They are considering a revision of the adjudication forms and the development of specific discipline committees to assist young directors with the task of developing a high school marching band. MMS(COLTON/DANNEN) to sign a contract with Music T's to provide t-shirts and memorabilia products to this festival. The Executive Committee reserves the right to select the specific products to be sold. PASSED Jay Nugent suggested consideration of the development of a state marching final. This will be taken under advisement.

ALL-STATE MUSIC FESTIVAL: The completed financial report was examined and discussed. This festival remains in excellent condition in all aspects. The secretary reminded everyone that the increase in conductor remuneration and the P.F.M.S. (public facility maintenance surcharge) could result in an increase in either registration or admission costs. This will be determined when the 2001-2002 budget is developed. MMS(MERZ/COLTON) to continue our agreement with Comprehensive Sound for supplying audio products to this festival. PASSED MMS(MERZ/PETERSON) to continue our agreement with Iowa Public Television for supplying video products to this festival. PASSED MMS(MERZ/BRIGHAM) to amend the All-State Camp policy allowing camps to begin any time on or after August 1. PASSED MMS(BRIGHAM/MERZ) the All-State t-shirts will be taken to each of the rehearsal facilities at a specific time to accommodate sales. PASSED The secretary presented a proposal for re-districting the state of Iowa for All-State auditions. This proposal will result in better equity among districts. MMS(MERZ/BRIGHAM) to re-district the state for All-State auditions as per that proposal. PASSED Kossuth, Humboldt, and Webster counties will move from the NC district to the NW district. Blackhawk and Tama counties will move from the NE district to the NC district. Boone, Dallas and Madison counties will move from the SC district to the SW district. The third Saturday in January will be recommended to the IMEA Executive Committee as the date for the joint meeting of boards and All-State Chairs.

DAG CONCERNS: Most issues had been presented and discussed as a part of the printed agenda. Kathy Nelson requested consideration of adding classical guitar as a S/SE event.

ASSOCIATION ISSUES: MMS(COLTON/BRIGHAM) to approve the registration and penalty deadlines as proposed by the secretary. PASSED MMS(BRIGHAM MERZ) to increase adjudicator/auditor remuneration to \$140.00 for the eight-hour day and to increase mileage to \$.26 per mile. PASSED The secretary was directed to send scholarship materials to high school counselors for better visibility and participation.

With no further business to discuss, the meeting was adjourned at 1:50 p.m.

Respectfully submitted,

Everett D. Johnson, Executive Secretary

**MINUTES OF EXECUTIVE COMMITTEE MEETING
June 28, 2001, 2000**

The Executive Committee of the Iowa High School Music Association met at 3:00 p.m., June 28, 2001, in Maui, HI, while in attendance at the National Federation Summer Convention. Members present were: Thomas Nugent, Villisca; Frank Brigham, Oelwein; Steve Colton, Marion; Tim Peterson, Charter Oak; and Tom Dannen, Truro. Jan Merz, Fort Dodge, was absent. Also in attendance was Everett D. Johnson, Executive Secretary, who served as the recording secretary, and Alan S. Greiner, incoming Executive Director. President Nugent chaired the meeting.

MMS(BRIGHAM/PETERSON) to approve the minutes of the April 18, 2001, meeting as printed and distributed. PASSED

MMS(BRIGHAM/DANNEN) to approve the financial bills as submitted. PASSED

Secretary Johnson presented the Report of Secretary, highlighting each of the festivals of 2000-2001. MMS(PETERSON/DANNEN) to approve the Secretary's Report. PASSED

The secretary presented a detailed budget proposal for the 2001-2002 fiscal year. MMS(COLTON/DANNEN) to approve the 2001-2002 Administrative Budget as presented. PASSED This motion leaves all registration fees and allotments at previous levels. For 2001-2002, these will be:

REGISTRATION FEES:

Marching Band - \$75.00	All-State Vocal - \$14.00
All-State Instrumental - \$10.00	Show/Jazz Choir - \$65.00
Jazz Band - \$70.00	Piano - \$9.00
Solo/Small Ensemble - \$6.50	Large Group Vocal - \$45.00
Large Group Instrumental - \$50.00	

GATE CHARGES:

Marching Band - \$5.00 adults; \$1.00 K-12	Show-Jazz Choir/Jazz Band - \$3.00
All-State - \$10.00 (\$9.00 for group orders)	Large Group Festival - \$3.00

SECRETARIAL ALLOWANCES:

Marching Band - \$40.00	Show Choir/Jazz Band - \$40.00
Show/Jazz Choir Only - \$20.00	Jazz Band Only - \$30.00
Piano - \$15.00	Solo/Small Ensemble - \$50.00
Large Group Friday - \$20.00	Large Group Saturday - \$40.00
Large Group Friday & Saturday - \$60.00	

CUSTODIAL ALLOWANCES:

Marching Band - \$75.00	Show Choir/Jazz Band - \$75.00
Show/Jazz Choir Only - \$50.00	Jazz Band Only - \$60.00
Piano - \$15.00	Solo/Ensemble - \$15.00 per center
Large Group Friday - \$50.00	Large Group Saturday - \$75.00
Large Group Friday & Saturday - \$100.00	

SALE PRICES:

All-State Audio Cassettes - \$12.00	Medals - \$2.80	Pins - \$2.25
All-State CD's - \$22.00	Small Ensemble Plaques - \$38.00	
All-State Video Cassettes - \$25.00	Large Group Plaques - \$45.00	
All-State T-shirts - \$10.00 (\$12.00 XXL)	Attachable Bars - \$15.00	

LARGE GROUP FESTIVAL: MMS(BRIGHAM/PETERSON) to implement an admission policy for chaperones as follows: Chaperones (3 per bus) will be granted free admission to this festival. If buses are not utilized, chaperones (2 per home room) will be granted free admission for this festival. PASSED MMS(PETERSON/COLTON) that no penalty will be assessed for "same center" changes for this festival; i.e., changing a bass clef chorus to mixed chorus or string orchestra to concert orchestra. This motion required a roll call vote. Colton-Aye; Peterson-Aye; Brigham-Aye; Nugent-Aye, Dannen-Nay. MMS(COLTON/DANNEN) to approve and implement the Required Music List and regulations as proposed by the Iowa Bandmasters Association. PASSED There was some discussion regarding the admission policy for this festival. The new chaperone provisions should alleviate some of this concern.

MARCHING BAND FESTIVAL: The IBA Marching Band Affairs committee has been working on revisions to the adjudication form for this festival. Those revisions will be reviewed once they are completed.

ALL-STATE FESTIVAL: The secretary presented an overview of the 2001 festival. Plans are developing smoothly for this event. Music has been ordered and the hotel block has been secured for the festival. Further discussion is required on the times and location of the sale of All-State T-shirts. ICDA will be re-locating their summer convention, calendar-wise, effective in 2003. MMS(BRIGHAM/DANNEN) to establish July 25, or the 1st business day following, as the release date for All-State Choral music. PASSED

SHOW-JAZZ CHOIR/JAZZ BAND FESTIVAL: MMS(DANNEN/PETERSON) to implement an admission policy for chaperones as follows: Chaperones (3 per bus) will be granted free admission to this festival. If buses are not utilized, chaperones (2 per home room) will be granted free admission for this festival. PASSED

ASSOCIATION CONCERNS: Meeting dates for 2001-2002 were set for October 17, January 19, April 17, and during the summer NF convention scheduled for June 28-July 2. The joint meeting with the IMEA Executive Board and All-State chairs was set for January 19. MMS(COLTON/BRIGHAM) to establish mileage allotments for the Executive Director as follows: 1/2 of the established association mileage allotment for travel to and from work; \$.30 per mile for any other personal mileage. PASSED Alan Greiner presented a

proposal to seek art work for consideration as a new logo for the Association. MMS(BRIGHAM/COLTON) High school students from member schools will be requested to submit suggestions. The student providing the winning logo will be granted a \$250.00 savings bond. PASSED. Mr. Greiner also led a discussion concerning costs and time-lines regarding dedicated access for the Association computers. Action will be required as the needs continue to develop.

With no further business to discuss, the meeting was adjourned.

Respectfully submitted,

Everett D. Johnson, Executive Secretary

**IOWA HIGH SCHOOL MUSIC ASSOCIATION
ADMINISTRATIVE BUDGET
2001-2002**

ITEM	Adopted 2000-2001 Budget	Expended July 1, 2000- June 30, 2001	Adopted 2001-2002 Budget
Salary and Services	\$106,000.00	\$103,290.74	\$133,360.00
Executive Committee	\$12,700.00	\$9,924.39	\$11,000.00
District Advisory Group	\$1,200.00	\$1,114.78	\$1,100.00
Travel Exp., Secretary	\$4,850.00	\$4,403.29	\$3,500.00
Special Committee	\$900.00	\$208.71	\$1,075.00
Office Supplies	\$1,900.00	\$1,849.43	\$2,000.00
Computer - Hdw/Rpr.	\$3,200.00	\$803.58	\$600.00
Printing	\$10,000.00	\$9,759.07	\$7,500.00
Telephone	\$700.00	\$636.75	\$700.00
Postage and Freight	\$8,000.00	\$7,752.72	\$7,300.00
Dues/Memberships	\$475.00	\$458.00	\$550.00
Insurance/Bonding	\$1,850.00	\$1,797.00	\$1,875.00
Auditor	\$1,575.00	\$1,600.00	\$1,700.00
Legal Contingency	\$2,000.00	\$80.00	\$2,000.00
Public Relations	\$250.00	\$280.50	\$250.00
Computer Software	\$2,000.00	\$758.66	\$1,275.00
Flowers/Contributions	\$525.00	\$391.71	\$525.00
Automotive Expense	\$1,000.00	\$1,113.72	\$1,050.00
Miscellaneous	\$200.00	\$680.22	\$2,000.00
TOTALS	\$159,325.00	\$146,903.27	\$179,360.00

CLASSIFICATION OF SCHOOLS FOR 2001-2002

(As of June 1, 2001)

The following is a listing of member schools of the Iowa High School Music Association as classified for the 2001-2002 school year. Classification is determined by the number of students in grades 9 through 11 as certified on the Basic Enrollment Data Survey. Reminder: A member school may elect to compete in the next higher classification by submitting a letter of request prior to September 1.

Class 4A

Ames	Des Moines, Hoover	Muscatine
Ankeny	Des Moines, Lincoln	Newton
Bettendorf	Des Moines, North	North Scott, Eldridge
Bishop Heelan, Sioux City	Des Moines, Roosevelt	Oskaloosa
Boone	Dowling, West Des Moines	Ottumwa
Burlington	Dubuque, Hempstead	Pleasant Valley
Cedar Falls	Dubuque, Senior	Prairie, Cedar Rapids
Cedar Rapids, Jefferson	Fort Dodge	Sioux City, East
Cedar Rapids, Kennedy	Fort Madison	Sioux City, North
Cedar Rapids, Washington	Indianola	Sioux City, West
Clinton	Iowa City, City High	Southeast Polk, Runnells
Council Bluffs, A Lincoln	Iowa City, West	Urbandale
Council Bluffs, T Jefferson	Johnston	Valley, West Des Moines
Davenport, Central	Lewis Central	Wahlert, Dubuque
Davenport, North	Linn-Mar, Marion	Waterloo, East
Davenport, West	Marshalltown	Waterloo, West
Des Moines, East	Mason City	

Class 3A

A-D-M, Adel	Estherville-Lincoln Central	Oelwein
Algona	Fairfield	Pella
Assumption, Davenport	Forest City	Perry
Atlantic	Glenwood	Red Oak
Benton, Van Horne	Grinnell	Saydel
Carroll	Harlan	South Tama County, Tama
Centerville	Humboldt	Spencer
Central Clinton, DeWitt	Independence	Spirit Lake
Chariton	Jefferson-Scranton	Storm Lake
Charles City	Keokuk	Vinton-Shellsburg
Clarke, Osceola	Knoxville	Washington
Clear Lake	Kuemper Catholic, Carroll	Waukee
Columbus, Waterloo	LeMars	Waukon
Creston	Maquoketa	Waverly-Shell Rock
Crestwood, Cresco	Marion	Webster City
Dallas Center-Grimes	MOC-Floyd Valley	W Delaware, Manchester
Davis County, Bloomfield	Mount Pleasant	Western Christian, Hull
Decorah	Nevada	Winterset
Denison-Schleswig	New Hampton	Xavier, Cedar Rapids
Epworth, Western Dubuque	Norwalk	

Class 2A

AGWSR, Ackley
 Albia
 Anamosa
 Aplington-Parkersburg
 Audubon
 Ballard, Huxley
 Battle Creek-Ida Grove
 Beckman, Dyersville
 Bedford
 Belle Plaine
 Bellevue-Instrumental
 Belmont-Klemme
 Bishop Garrigan, Algona
 Bondurant-Farrar
 Camanche
 Carlisle
 Cascade, Western Dubuque
 Center Point-Urbana
 Central Lee, Donnellson
 Central, Elkader
 Cherokee, Washington
 Clarinda
 Clarion-Goldfield
 Clayton Ridge, Guttenberg
 Clear Creek-Amara
 Colfax-Mingo
 Columbus, Columbus Jct.
 Denver
 Dike-New Hartford
 Eagle Grove
 East Marshall, LeGrand
 Eddyville-Blakesburg
 Eldora-New Providence
 Emmetsburg
 Garner-Hayfield
 Gilbert

Gladbrook-Reinbeck
 Grundy Center
 Hampton-Dumont
 Hartley-Melvin-Sanborn
 Hudson
 Interstate 35, Truro
 Iowa Falls
 Jesup
 Lake Mills
 Logan-Magnolia
 Louisa-Muscataine
 Maple Valley-Anthon-Oto
 Maquoketa Valley, Delhi
 Mediapolis
 MFL MarMac
 Mid-Prairie, Wellman
 Midland, Wyoming
 Missouri Valley
 Monticello
 Mount Ayr
 Mount Vernon
 Nashua-Plainfield
 Nodaway Valley
 North Cedar, Stanwood
 North Fayette, West Union
 North Polk, Alleman
 North-Linn, Troy Mills
 Northeast, Goose Lake
 Ogden
 Okoboji, Milford
 Osage
 Panorama, Panora
 PCM, Monroe
 Pella Christian
 Pocahontas Area
 Prairie Valley, Gowrie

Riverside, Oakland
 Roland-Story, Story City
 Saint Albert, Council Bluffs
 Saint Ansgar
 Saint Edmond, Fort Dodge
 Sergeant Bluff-Luton
 Sheldon
 Shenandoah
 Sibley-Ocheyedan
 Sigourney
 Sioux Center
 Solon
 South Hamilton, Jewell
 South O'Brien, Paullina
 South Winneshiek, Calmar
 SE Webster, Burnside
 Starmont
 Tipton
 Tri-Center, Neola
 Turkey Valley, Jackson Jct
 Underwood
 Union, LaPorte City
 Unity Christian, Orange City
 Van Buren, Keosauqua
 Wapello
 Wayne, Corydon
 West Branch
 West Central Valley, Stuart
 West Hancock, Britt
 West Liberty
 West Lyon, Inwood
 West Marshall, State Center
 West Sioux, Hawarden
 Westwood, Sloan
 Williamsburg
 Wilton

Class 1A

A-H-S-T, Avoca
 Akron-Westfield
 Alburnett
 Alta
 B-G-M, Brooklyn
 BCLUW, Conrad
 Bellevue-Vocal
 Boyden-Hull
 Boyer Valley, Dunlap
 Cardinal, Eldon
 Central Decatur, Leon
 Central Lyon, Rock Rapids

Colo-Nesco
 Coon Rapids-Bayard
 Corning
 Danville
 Don Bosco, Gilbertville
 Dunkerton
 Durant
 East Buchanan, Winthrop
 East Central, Miles
 East Union, Afton
 Edgewood-Colesburg
 English Valleys, N English

Galva-Holstein
 Gehlan Catholic, LeMars
 George-Little Rock
 Greene
 Griswold
 Highland, Riverside
 Hinton
 Iowa Valley, Marengno
 Kee, Lansing
 Laurens-Marathon
 Lawton-Bronson
 Lisbon

Lynnville-Sully
 Madrid
 Maharishi, Fairfield
 Manning
 Manson Northwest Webster
 Marcus-Meridan-Cleghorn
 Martensdale-St Mary's
 Montezuma
 New London
 Newell-Fonda
 Newman Cath., Mason City
 Nora Springs-Rock Falls
 North Central, Manly
 North Iowa, Buffalo Center
 North Mahaska, New Sharon
 North Tama, Traer

NUHS, Cedar Falls
 Northwood-Kensett
 Pekin
 Pleasantville
 Postville
 Regina, Iowa City
 River Valley, Correctionville
 Rock Valley
 Rockford
 Rockwell City-Lytton
 Sac City
 Schaller-Crestland
 SCMT, Sheffield
 Sioux Central, Sioux Rapids
 SE Warren, Liberty Center
 Southern Cal, Lake City

Sumner
 Treynor
 Valley, Elgin
 WACO, Wayland
 Wall Lake View Auburn
 Wapsie Valley, Fairbank
 West Bend-Mallard
 West Burlington
 West Harrison, Mondamin
 West Monona, Onawa
 Winfield-Mt Union
 Woodbine
 Woodbury Central, Moville
 Woodward-Granger

Class A

Adair-Casey
 Albert City-Truesdale
 Alden
 Allison-Bristow
 Andrew
 Anita
 Aquinas, Fort Madison
 Ar-We-Va
 Armstrong-Ringsted
 Aurelia
 Baxter
 Bennett
 C&M, Massena
 C-W-L, Corwith
 Cal-Dows, Latimer
 Calamus-Wheatland
 Cardinal Stritch, Keokuk
 Central City
 Charter Oak-Ute
 Clarksville
 Clay Central-Everyly
 Collins-Maxwell
 Des Moines Christian
 Diagonal
 Earlham
 East Greene, Grand Jct
 Elk Horn-Kimballton
 Essex
 Exira
 Farragut
 Fox Valley, Milton
 Fredericksburg
 Fremont-Mills, Tabor
 Glidden-Ralston

GMG, Garwin
 Graettinger
 Grandview Park Baptist, DM
 Guthrie Center
 H-L-V, Victor
 Hamburg
 Harmony, Farmington
 Harris-Lake Park
 Hubbard-Radcliffe
 IKM, Manilla
 Iowa Christian Academy
 Iowa Mennonite, Kalona
 Janesville
 Keota
 Kingsley-Pierson
 Lamoni
 Lenox
 Lineville-Clio
 Lone Tree
 Malvern
 Marquette, Bellevue-Vocal
 Marquette, West Point
 Melcher-Dallas
 Moravia
 Mormon Trail, Garden Grove
 Moulton-Udell
 Murray
 Nishna Valley
 North Kossuth, Swea City
 North Winneshiek, Decorah
 NE Hamilton, Blairsburg
 Notre Dame, Burlington
 Odebolt-Arthur
 Olin

Orient-Macksburg
 Paton-Churdan
 Pomeroy-Palmer
 Preston
 Prince of Peace, Clinton
 Remsen-Union
 Riceville
 Rockwell-Swaledale
 Russell
 Ruthven-Ayrshire
 Sentral, Fenton
 Seymour
 Sidney
 South Page, College Springs
 Spalding Catholic, Granville
 Springville
 St Katherine's/St Mark's
 St Mary's, Remsen
 St Mary's, Storm Lake
 Stanton
 Terrill
 Tri-County, Thornburg
 Tripoli
 Twin Cedars, Bussey
 Twin River Valley, Bode
 Van Meter
 Ventura
 Villisca
 Walnut
 Walnut Ridge Bapt, Waterloo
 West Central, Maynard
 Whiting
 Woden-Crystal Lake-Titonka

JUDGING REQUIREMENTS

Persons interested in serving the Iowa High School Music Association as an adjudicator are directed to meet three criteria established by the Executive Committee:

1. You must have taught successfully in the area of adjudication for five years.
2. You must attend an adjudicator's certification clinic session.
3. You must be recommended, in writing, to the IHSMA office by two people currently on the "Approved" adjudicator listing.

IHSMA ADJUDICATION CERTIFICATION CLINICS

The Iowa High School Music Association will conduct Adjudicator Certification Clinics in late August for wind, percussion, and string adjudicators; and in late September for vocal adjudicators. These sessions will operate between the hours of 7:00 – 9:00 p.m. There will be a specialized session for vocal adjudicators on Sunday, July 22, 2001, as a part of the ICDA Summer Symposium from 6:00 – 8:00 p.m. There will also be specialized sessions at the ISTA Conference, Sunday September 16 from 1:00 – 3:00 pm and at the IBA Conference, May 11 from 1:00 – 3:00 p.m. **Registration is required for all certification clinics as a means of guaranteeing the correct amount of materials.**

Six different sites have been selected geographically for each discipline. **You must register for attendance in advance of the clinic.** A site will not open if less than five (5) people will be in attendance. If a site will not open because of insufficient enrollment, we will attempt to schedule you into a nearby site on a different date.

REGISTRATION FOR ATTENDANCE MUST BE BY TELEPHONE ONLY! Call the Association office (515-432-2013), ask for Jeanie, to reserve a place at the session you have chosen to attend. **This must be done by August 13 for instrumental adjudicators and by September 10 for vocal adjudicators.**

CERTIFICATION CLINIC SITES

Wind, Percussion, String Vocal

MASON CITY, ICDA Symposium		Sunday – July 22
LEMARS High School	Monday-August 20	Monday- September 17
CAL-DOWS High School	Tuesday-August 21	Tuesday-September 18
LEWIS CEN. HS, Council Bluffs	Thursday-August 23	Thursday-September 20
OELWEIN High School	Monday, August 27	Monday-September 24
INDIANOLA High School	Tuesday-August 28	Tuesday-September 25
IOWA CITY, Rm 120 Voxman, U of I	Thursday-August 30	Thursday-September 27
DES MOINES, ISTA Conf.	Sunday-September 16	
DES MOINES, IBA Conf.	Saturday-May11	

APPROVED ADJUDICATORS - July 1, 2001

The following people are listed as "approved" adjudicators as of July 1, 2001. "Approved" status expires at the end of the calendar year preceding each name.

2004	John Aboud.....	Algona	2001	Gary Clark.....	Bettendorf
2003	Frank Aiello.....	Burbank SD	2002	Arla Clausen.....	Underwood
2001	Melba Akason.....	Oskaloosa	2003	Ron Coberley.....	New London
2002	William Akason.....	Oskaloosa	2004	Benjamin Coelho.....	Iowa City
2003	Les Aldrich.....	Oelwein	2003	Carl Collins.....	Davenport
2003	Martin Aldrich.....	Clarinda	2002	Steve Colton.....	Marion
2002	Russell Alexander.....	Knoxville	2003	Colin Conner.....	Canton SD
2002	Bernerd Allgood.....	Albia	2001	Jonathan Cooper.....	St Charles IL
2002	Keith Altemeier.....	Fort Dodge	2002	Paul Copenhaver.....	Moberly MO
2002	Mary Andersen.....	Fairfield	2002	Kim Cosens.....	Waseca MN
2002	Robert Anderson.....	Cedar Rapids	2003	Christopher Covell.....	Ames
2001	Vicky Anderson.....	Clarence	2003	Martin Crandell.....	Storm Lake
2002	Donna Angell.....	Iowa City	2001	Eloise Cranke.....	Des Moines
2001	Mildred Appleoff.....	Falls City NE	2001	Pamela Crawford.....	Maquoketa
2003	Myron Armour.....	Smithland	2002	Glee Crippin.....	Storm Lake
2003	Rick Ashby.....	Des Moines	2003	James Crowder.....	Bettendorf
2003	Brenda Ashley.....	Polk City	2001	George Curtis.....	Denver
2001	Randy Atkinson.....	Cedar Rapids	2001	Ragene Darling.....	Logan
2003	Janet Ault.....	Mount Vernon	2003	Jim Davis.....	Monticello
2002	Bill Backlin.....	Mason City	2001	Robert Davis.....	Mason City
2001	David Ballman.....	Emmetsburg	2001	Clay Dawson.....	Long Grove
2002	Richard Bardole.....	Ogden	2003	Pam DeBoer.....	Hollandale MN
2003	Dan Barkel.....	Hull	2001	Susan DeHaan.....	Orange City
2003	Bruce Bartels.....	Hooper NE	2003	Kathy DeJong.....	Orange City
2003	David Batter.....	Omaha NE	2002	Phil DeLong.....	Indianola
2003	Janet Baum.....	Eagle Grove	2002	James DePrizio.....	Cedar Falls
2001	James Bawden.....	Blue Grass	2002	John DeSalme.....	Solon
2002	David Bean.....	Morrison IL	2003	John Devlin.....	Le Grand
2001	Roger Becker.....	New Hampton	2003	Richard Dewein.....	Algona
2003	Pamela Beery.....	Shenandoah	2004	Roger DeYoung.....	Lisbon
2002	Perry Bekkerus.....	Denison	2003	Earle Dickinson.....	Shellsburg
2003	Carroll Bennink.....	Des Moines	2003	Mark Dorr.....	Altoona
2002	Kim Benson.....	New Sharon	2002	James Douglass.....	Iowa City
2001	Junelle Benter.....	Monticello	2003	Dennis Downs.....	Cedar Falls
2003	Ric Benzing.....	Monona	2002	Ralph Drollinger.....	Fort Dodge
2003	Jim Berry.....	Iowa City	2003	David Earp.....	Caledonia MN
2003	Jerry Bertrand.....	Marcus	2002	Mary Egger.....	Gowrie
2001	Judy Bethman.....	Victor	2002	Carolyn Eggleston.....	DeWitt
2002	Guy Blair.....	Pella	2003	Bruce Eilers.....	Waterloo
2004	Diana Blake.....	Waverly	2001	Cheryl Einsweiler.....	Hudson
2002	Janet Bloom.....	Oxford	2003	Robert Ellingson.....	Sioux City
2003	Lawrence Bobe.....	Mount Vernon	2003	Barbara Emerson.....	Mason City
2004	Carmen Borchartd.....	Coralville	2002	Jon Engelhardt.....	Adel
2001	Marty Brenden.....	Jefferson	2003	Robert Engelson.....	Clinton
2001	Frank Brigham.....	Oelwein	2002	Michael Esser.....	Onalaska WI
2002	Jack Brookshire.....	Lawrence KS	2001	Chris Ewan.....	Ames
2003	Jackie Burk.....	Goodell	2001	Luann Ewan.....	Ames
2002	Don Bury.....	Baxter	2002	Nancy Ewing.....	LeMars
2003	David Carlsen.....	Blair NE	2003	Randy Ewing.....	LeMars
2002	Lance Carter.....	Sterling IL	2003	Kay Fast.....	Villisca
2002	Dan Cassady.....	Fort Dodge	2003	Alan Feirer.....	Winterset
2002	Sandra Chapman.....	Fort Madison	2001	Alice Feldmann.....	North Liberty
2002	David Clark.....	Council Bluffs	2002	Ken Ferjak.....	Forest City

2001	Linda Ferjak.....	Forest City	2003	Matt E. Huth.....	Omaha NE
2003	Lucy Ferrin.....	Sibley	2003	Duane Ites.....	Spirit Lake
2004	Glen Flanigan.....	Ottumwa	2003	Sally Ites.....	Spirit Lake
2003	Ronald Fletcher.....	Winterset	2002	Allan Jacobson.....	Cedar Falls
2002	David Fog.....	Emmetsburg	2003	Peter Jacobus.....	Glenwood
2002	Albert Forcucci.....	Des Moines	2001	Jeffrey James.....	Omaha NE
2001	Elizabeth Fritz.....	Decorah	2003	Marlin Jeffers.....	Sioux City
2002	Lowell Gangstad.....	Northwood	2003	Brad Jensen.....	Cedar Falls
2002	Bobbi Garringer.....	West Des Moines	2002	Roger Jensen.....	Treynor
2002	Homer Gartz.....	Ames	2002	Deb Jepson.....	Clarinda
2003	Eugene Gast.....	Davenport	2001	Jerrold Jimmerson.....	Manson
2002	Roi Anne Gearhart.....	Eagle Grove	2001	Tim Jobes.....	Waverly
2003	Joel Gettys.....	Des Moines	2003	Bloyce Johnson.....	West Des Moines
2003	Beverly Gibson.....	Sioux Falls SD	2002	Dwayne Johnson.....	Cedar Falls
2001	Doug Gibson.....	Omaha NE	2002	Eric Johnson.....	Atlantic
2003	William Gibson.....	Sioux Falls SD	2004	Everett Johnson.....	Boone
2003	Gerald Gleason.....	LaCrosse WI	2003	Nadine Johnson.....	Tipton
2001	Jim Gosnell.....	Cedar Falls	2003	Doran Johnson.....	Omaha NE
2003	John L. Gosnell.....	West Des Moines	2001	John Jones.....	Macomb IL
2003	Nancy Grady.....	Traer	2003	Sue Jones.....	Shenandoah
2001	Denise Graettinger.....	Waverly	2001	John Kassler.....	Chariton
2002	Lauretta Graetz.....	Burnsville MN	2002	Kent Keating.....	Washington
2001	Michael Green.....	Davenport	2002	Paula Keeler.....	Storm Lake
2001	Arden Greener.....	Elgin	2001	Scott Keese.....	Huxley
2003	Alan Greiner.....	Jefferson	2001	Ruth Keraus.....	Mt Pleasant
2002	Gary Griffin.....	New Hampton	2002	Rebecca Kerr.....	Long Grove
2002	Carson Griffith.....	Grand Junction	2003	Jerry Kinney.....	West Des Moines
2001	Joan Gross.....	Yankton SD	2001	Kenneth Kirby.....	Calmar
2002	David Gudmastad.....	Winona MN	2002	Dennis Kirkpatrick.....	West Des Moines
2002	Vernon Haagsma.....	Pella	2002	Jeffrey Kirkpatrick.....	Osage
2003	Keith Haan.....	Davenport	2001	Curtiss Klein.....	Fort Dodge
2001	Leon Haefner.....	Northfield MN	2003	JoAnn Knipfer Sherman.....	Waukon
2002	Carol Hallberg.....	LeMars	2001	August Knoll.....	Wheatland
2002	Ted Hallberg.....	LeMars	2002	Elizabeth Krivokucha.....	Council Bluffs
2001	Terry Hanzlik.....	Council Bluffs	2003	Martha Kroese.....	Cedar Falls
2001	Stephen Harbaugh.....	Victor	2003	Terry Kroese.....	Cedar Falls
2002	Tanya Hardy.....	Waukon	2002	Leon Kuehner.....	Hampton
2001	Jay Hauenstein.....	Columbus Junction	2003	Kandy Kunzman.....	Shelby
2003	Tom Haugen.....	Alexandria MN	2001	Johnny Kurt.....	Council Bluffs
2003	Laura Haverdink.....	Orange City	2004	Dean Lamp.....	Glidden
2001	Cheri Helmer-Rienschke.....	Omaha NE	2003	Brad Lampe.....	Osceola
2001	Steve Helscher.....	Columbus Junction	2002	Paul Langholz.....	Clear Lake
2002	Dennis Hendrickson.....	Atlantic	2001	Ann Lannan.....	Eldridge
2003	Douglas Herbon.....	Postville	2002	David Larsen.....	Ogden
2002	Jackson Herr.....	Minnesota City MN	2003	Robert L Larson.....	Sioux City
2002	David Heupel.....	Jefferson	2003	David Law.....	Marion
2004	John Hewett.....	Columbia MO	2001	Mark Laycock.....	Ames
2002	Peter Hittle.....	Sioux City	2003	Gary Leatherman.....	Cherokee
2002	Laurie Hoepfner.....	Osage	2001	Alfred Leathers.....	Waukon
2003	Robert Hoffman.....	Humboldt	2003	Bret Lee.....	Marshalltown
2001	Michael Hogan.....	Sioux City	2003	Thomas Lee.....	Muscatine
2002	Harold Hokenson.....	Sterling IL	2002	Mark Lehmann.....	Waverly
2003	Mary Hulstein.....	Orange City	2003	Lance Lehmberg.....	Sioux City
2003	John Holeman.....	Centerville	2001	Gene LeVasseur.....	Cedar Rapids
2001	Steve Holland.....	West Des Moines	2001	Steve Linn.....	Ames
2002	Ray Holtz.....	Greene	2001	Vaughn Lippoldt.....	Council Bluffs
2004	Dave Honts.....	Iowa City	2001	Steve Litwiller.....	Boonville MO
2004	Don Howard.....	Davenport	2003	Rosemary Lloyd-Cameron.....	Anita
2002	Edward Huenemann.....	Marion	2003	Jean Loger.....	Dike
2002	Gerald Huldeen.....	Sioux City	2001	James Loos.....	Ankeny
2002	Suzanne Hunter.....	Newton	2004	Bard Mackey.....	Waverly

2003	Larry Mannasmith.....	Red Oak	2002	Dave Richardson.....	Boone
2002	Steven Manning.....	Williamsburg	2002	Stan Rishoi.....	Alta
2001	Mark Mason.....	La Vista NE	2003	Ken Robison.....	Marion
2003	Andy Mast.....	Bettendorf	2003	Gary Rock.....	Fort Dodge
2002	Alan Mattison.....	Belmond	2001	Tom Rosenberger.....	Ankeny
2003	Cameron Mc Curdy.....	Havelock	2003	Robert Roussel.....	Monticello
2002	Douglas Mc Farlane.....	Oelwein	2002	David Rutt.....	Forest City
2001	John Mc Gilligan.....	Sidney	2002	John Ryan.....	Spencer
2002	Katie Mc Laughlin.....	Harlan	2002	Holli Safley.....	Peterson
2003	Vicki Meadows.....	Marion	2001	Thomas Sandholm.....	Montezuma
2002	Billie Jean Melchert.....	Monticello	2002	Richard Scheffel.....	Maynard
2001	Lee Mendyk.....	Winona MN	2001	Paul Scheuerle.....	Mitchell SD
2003	R J Metteer.....	Lincoln NE	2003	Tom Schilke.....	Waterloo
2001	Cindy Metzger.....	Atlantic	2001	Julie Schnieders.....	Indianola
2002	Arthur Meyer.....	Atlantic	2002	Margaret Schultz.....	Wisner NE
2002	Christa Miller.....	Des Moines	2003	Robert Shafer.....	Waterloo
2003	Steve Miller.....	Ottumwa	2002	Rod Shedenhelm.....	Sioux Rapids
2003	Jim Misner.....	Omaha NE	2001	Earl Sherburne.....	Sioux Falls SD
2002	Larry Mitchell.....	Fort Dodge	2001	Terry Siglin.....	Greenfield
2003	Lawrence L. Mitchell.....	Vermillion SD	2001	Lee Spann.....	Council Bluffs
2003	James Moen.....	Alton	2003	John Standerford.....	Bedford
2003	David Moore.....	Omaha NE	2002	Barry Stevens.....	Lake City
2001	Jeff Mount.....	Blair NE	2003	Bonnie Stewart.....	Hampton
2002	Roger Mueller.....	Manchester	2001	Paul Susemihl.....	Omaha NE
2003	Russ Nagel.....	Sioux City	2001	Penny Talbott.....	Arlington Heights IL
2003	Diane Nail.....	Corwith	2003	Rick Tegeler.....	Des Moines
2001	Alan Naylor.....	Palo	2002	Ed Tegtmeier.....	Des Moines
2002	David Neeley.....	Creston	2003	Roger Thaden.....	Lincoln NE
2003	Kathleen Nelson.....	Lake Mills	2003	Dr Terry Marc Theis.....	Bennington NE
2003	Maria Nelson.....	Stanton	2003	Helen Thiesen.....	Manilla
2001	Dave Newport.....	Grinnell	2003	Loretta Thomas.....	Vermillion SD
2002	Lois Nichols.....	Bettendorf	2002	Steven Thompson.....	Forest City
2001	Richard Nicklay.....	Okoboji	2003	Jill Tindall.....	Bettendorf
2002	Bruce Norris.....	Mondamin	2003	Dallas Tjaden.....	Council Bluffs
2002	Jay Nugent.....	Urbandale	2003	Jeanne Tjaden.....	Council Bluffs
2001	Tim Nutting.....	Des Moines	2004	Diane Tordoff.....	Eagle Grove
2002	Dalene O'Brien.....	Boone	2001	Jane Triplett.....	Fairfield
2002	Sarah O'Malley.....	Grundy Center	2003	C. Leland Triplitt.....	Jesup
2002	Mary Oestmann.....	Lincoln NE	2001	Ron Troester.....	Omaha NE
2002	Randy Oldfield.....	Winfield	2001	John Turnage.....	Pleasantville
2002	Gloria Olson.....	Des Moines	2002	Roger Twuiten.....	River Falls WI
2001	Michelle Olson.....	Ankeny	2003	David Twombly.....	Osceola
2001	Michael Omarzu.....	Norwalk	2001	Leonard Upham.....	Cedar Falls
2003	Oscar Ortiz.....	Leon	2002	William Van Devender.....	Oskaloosa
2001	Vic Pearson.....	Zearing	2002	Gayle Van Hooser.....	Oskaloosa
2003	Gary Pease.....	Cedar Falls	2002	Harvey Von Wald.....	Mason City
2001	Joseph Pekas.....	Mitchell SD	2004	Jim Vowels.....	Waverly
2003	Boyd Perkins.....	Coralville	2002	Mary Wachter.....	Hinton
2001	Bruce Perry.....	Sac City	2001	John Wagner.....	Grinnell
2003	Michael Peters.....	Creston	2001	Paul Wigley.....	Lakeville MN
2002	Brent Peterson.....	Clive	2001	Mary Williams.....	Northfield MN
2002	Jon Peterson.....	Lincoln NE	2001	David Wilson.....	Guttenberg
2002	Tim Peterson.....	Charter Oak	2002	Catherine Winckler-Brown.....	Sioux City
2004	Michael Plake.....	Clive	2003	Jim Wright.....	Marion
2001	Ronald Prill.....	Fairfield	2003	William Wyman.....	Lincoln NE
2001	Arnold Rabe.....	West Burlington	2001	Allan Yeager.....	Ida Grove
2001	Charles Radke.....	Grand Junction	2003	Tim Yontz.....	Omaha NE
2003	Paul Ramp.....	Friend NE	2003	David Young.....	Lincoln NE
2003	Dick Redman.....	Pella	2001	Robert Youngquist.....	Washington

